

REGION THREE NEWSLETTER

FALL 1987

Now that our 1987 Competitive Trail Riding season has come to a close...great memories of all our favorite Rides are stored away in our minds to look back on during the long winter ahead. Many a story of all our riding adventures will surely be elaborated upon at the up-coming year-end Seminar in Albuquerque, and at the NATRC National Convention in Colorado Springs this February 1988. Below are the final Ride Write-Ups that have been sent into this Editor. Read them, and remember how much fun they really were!

TURKEY TRACK III

Turkey Track III, sponsored by Cooper Press and T.R.A.I.L. With Horses, was held on June 27 & 28, 1987 in the Manzano Mountains east of Albuquerque, New Mexico. It was a two-day ride giving riders a look at the lovely terrain so close to the city. The trail on Saturday took riders through juniper, pinon and pine forests to the top of Cedro Peak. A P&R team met riders there as well as thousands of ladybugs! The view from the top was great.

The second P&R on Saturday was exciting for Novice riders as a range horse stalked and attacked riders on a mandatory trot! The horse even followed one rider into the P&R stop. After that excitement, the rest of the trail was a breeze.

The Sunday trail gave riders a different trail with even more lovely scenery with judges hiding in the bushes. The weather was cool and pleasant. While waiting for the judges to complete their work, the riders were treated to T.R.A.I.L. With Horses ribbon tree. Each rider picked a numbered ribbon from the ribbon tree and a raffle was conducted by Matt Henry. (Quite cute, and quite hilarious...Matt Henry!) Each rider received a small prize, some just for fun and some nice. This event gives all a chance to relax and make the wait for scores more fun. We hope all who rode with us this year will be back next year and bring their friends with them!

Turkey Track III Ride results for June 1987:

OPEN DIVISION

- Sweepstakes - Panze Zarnite/Jo Dean Parish
Heavyweight - 1/6 Nightswind Dancer/Virginia Cole
2/4 Raf's Rainbow/Dean Schrader
3/2 Silver Springs Derek/Chuck Keil
4/1 Tabour/Linda Adams
5/3 Lark/Jill Talbot
6/ Miss Eternal Eddie/Elsie Ryland
/5 Mahra Khan/Milne Parish

- Lightweight - 1/2 Panze Zarnite/Jo Parish
2/4 San Barraff/Kathy Morris
3/ Pas Rafaga/Judy Wise
4/6 Aftamia/Ariel Schrader
5/ Angel/Pat Seymor
6/ Sudana Baba Yaga/Cheryl Brooks
/1 Gator Shane/Susan Witter
/3 Chipeta Sno/Sena Fitzpatrick
/5 Ashley/Susan Camrud

Junior - 1/1 Missey's Love Child/
Heather Hansche

**RIDE
WRITE-
UPS**

*May you always camp
Where the water runs sweet,
With plenty of shade and grass,
Where well trod trails
Of friendship meet,
As the kind years gently pass.*



HAPPY THANKSGIVING!

(continued.....)

EDITOR'S BOX

Please send all ads, articles, photos and other news items to the Editor no later than December 25th, 1987 (Christmas!) for the Winter issue. All articles must be typed and double-spaced, please! Send to:

Jill Talbot, Editor
JET Arabian Ranch
858 Marshall Road
Boulder, CO 80303
303/494-2531 (home)
303/499-6469 (work)

NOVICE DIVISION

- Sweepstakes - Ra Shammar/Vern Vobejda
Heavyweight - 1/3 Ra Shammar/Vern Vobejda
2/5 Dakhil Allah Ra/Ann Newsted
3/2 Alegria/Bruce Whittet
4/1 Colorado Red/Jack Anderson
5/ Seneca/Pat Hansford
6/ Shawnww My Lad/Wava O'Brien
4 Max/Vicki Badura
6 Boxcar's Tewa/Judd Adams
Lightweight - 1/1 Ruby/Chris Husted
2/ Elzear/Vicki Caparelli
3/4 Raamo/Loretta Maez
4/2 Kiowas Columbine/Heidi Lincoln
5/ Riterat/Susan LaRue
6/ Tequila/Chris Hoden
3 Pal/Sherry Thompson
5 Spr the Gambler/Shannon Hoden
6 Zaman's Image/Robin Claxton
Junior - 1/1 Aquila/Courtney Hodge
2/2 Kelpie/Catherine Judson
3/3 Serora Seronique/Cory Baker

EL JINETE SOLITARIO RIDE

The El Jinete Solitario Ride was held on July 25 & 26, 1987 above the beautiful Purgatory Ski Resort north of Durango, Colorado. Riders showed great enthusiasm for riding in the breathtaking summer beauty of the slopes they ski in the winter. The weather was gloriously warm and sunny; wildflowers were abundant; the views were magnificent; and, appetites increased as the day wore on. Unfortunately the chuck-wagon got stuck on the way up the mountain, but with help, it finally arrived...better late than never!

Forty-nine riders were judged by Louis Pavetti, DVM and Bev Tibbits and Judi Forbis. Only three horses were pulled, and the rest were in such good condition, the judging was close, the scores were high and a great ride was enjoyed by all.

Special thanks to everyone who worked hard before, during and after this ride...especially those who worked all three shifts!

El Jinete Solitario Ride results for July 1987:

OPEN DIVISION

- Sweepstakes - Mahra Khan/Milne Parish
Heavyweight - 1/2 Mahra Khan/Milne Parish
2/6 Nightswind Dancer/Virginia Cole
3/1 Raf's Rainbow/Dean Schrader
4/4 Silver Springs Derek/Chuck Keil
5/3 Blue Daniel's Charlie Brown/Nick Stevens
6/5 First Nighter/Jan Thomas
Lightweight - 1/5 Panze Zarnite/Jo Dean Parish
2/3 San Barraf/Kathy Morris
3/ Tacca Tu/Beth Gingold
4/6 Gator Shane/Susie Witter
5/4 Par Ali-Hawa/Laurie Butterfield
6/1 Kazara/Jeri Avila
2 Sharwij/Barb Jagoda
Junior - 1/2 Golani/Jeanne Vanlanker
2/1 Gloree Bee/Kristin Alexander

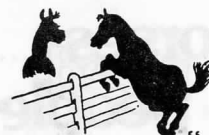
NOVICE DIVISION

- Sweepstakes - Brody/Violet Sue Anderson
Heavyweight - 1/2 Par Rasul/Debbi Jablonski
2/5 Jeddah/Steve Hansen

HORSEMANSHIP POINTERS



He should be trained to step over fallen timber without hesitation



*"What stories
we have to tell!"*

- Lightweight - 3/4 Lady E. Fancy/Steve Ancell
4/1 Rashammar/Vern Vobejda
5/ CF Magic Mist/Sherry Whittet
6/3 Colorado Red/Jack Anderson
/6 Striker II/Reuben Cox
1/ Brody/Violet Sue Anderson
2/ Summerwind Tamburene/Cheri Livingston
3/1 Mountain Music's Gr. Dawn/Linda Stevens
4/ Basklore/Cheri Deaver
5/ Jack's Super Angel/Kathryn Hayes
6/ Tequila/Chris Hoden
/2 Siete/Sara Davis
/3 Kiowas Columbine/Heidi Lincoln
/4 Colorado Bonanza/Don Grieser
/5 HCC Walaw/Bob Racicot
/6 Nugget/Patti Embree
Junior - 1/1 Awalanis Aquila/Courtney Hodge

THE VIRGINIA DALE RIDE

Too! Too! We don't like to blow our own horn, but we're darn proud that the Virginia Dale Trail Ride was such a success for our first venture into the world of Ride Management. After a rainy Friday check-in at the historic rodeo arena on the =7 Ranch, a beautiful rainbow marked the promise of a perfect weekend.

Forty enthusiastic riders embarked on Saturday's scenic trails through the eastern slope of the Colorado and Wyoming Rockies.

After horsemanship judge, Patsy Tomb, had a whirlwind motorcycle tour of the trail looking for judging spots (with her eyes closed), she settled in with her mosquito netting camouflage ready for unsuspecting horses and riders. The normally sweet and kind-tempered, Dr. Louis Pavetti, and his lovely daughter, Nancy, became uncharacteristically gruff after being chauffeured in a truck scented with "Eau de sour milk". The long hours in the bushes were a welcomed treat! The riders' temperments were also sweetened by ingestion of masses of candy donated by the Ride Manager, Shawn Murphy. This was intended to placate riders as they negotiated such obstacles as Wall Rock, THE BOG and Buck Mountain (aptly named for the behavior of management's horses during trail marking).

The Ride was capped off by the presentation of many wonderful awards, donated by gracious business in Northern Colorado and Southern Wyoming. Sweepstakes award was a stunning Michael Atkinson print which will become a tradition for the Ride.

Thanks to everyone who came and made this such a memorable first Ride! And a special thanks to Gay O'Rourke and her kids whose smiles and hugs were icing on the cake of that great weekend. We would like to recognize the extra efforts of Dick Evans, Vickie Heniser, Steve Murphy, Jacques Rieux, Chuck Keil, the Larimer County Horseman's Assoc. and all of our faithful workers.

With love, Shawn Murphy &
Cindy McNamara

Virginia Dale Ride results for
August 1987:

OPEN DIVISION

- Sweepstakes - Sharwif/Barb Jagoda
Heavyweight - 1/2 CR Krystalette/
Pat Jubbs
2/1 Mahra Khan/Milne
Parish
3/4 Tabour/Linda Adams
4/3 First Nighter/
Jan Thomas
/5 Kaheen Yuam/Stacy
McKelvy

Horse Interest Endures

Sue Bretag was a paralegal in the district attorney's office in Colorado Springs. She was also a fighter.

For 15 years she fought cancer. Eighteen times she underwent surgery for abdominal cancer; 17 times she recovered and returned to work.

Horses were her love. She wrote numerous articles for horse magazines and rode her horses every day until five weeks before her death.

Sue Bretag planned ahead. On Oct. 11, 1985, she signed her will leaving 60 percent of her estate to relatives and friends and the other 40 percent to horse organizations, including 10 percent to Morris Animal Foundation for equine research. The Foundation already has received more than \$4,000 from the bequest, continuing the interest of Sue Bretag in the welfare of horses.



Reprinted from August issue of the
Morris Animal Foundation Newsletter.

(continued.....)

horses need people

(VIRGINIA DALE RIDE....continued)

- Lightweight - 1/1 Sharwif/Barb Jagoda
2/3 Gator Shane/Susie Witter
3/4 Tonya Tucker/Jas McMahon
4/2 Panze Zarnite/Jo Dean Parish
/5 Brown R. Foxy/Susan McKelvy

NOVICE DIVISION

- Sweepstakes - Shadow Play/Larry Tobias
Heavyweight - 1/3 Shadow Play/Larry Tobias
2/1 Rashammar/Vern Vobejda
3/ Gwenifar/Ron Kruczek
4/6 Zaffarancho/Sandra Kruczek
5/2 Boxcars Tewa/Judd Adams
6/5 Duchess/John Roland
/4 Syn Aire/Jeff Waller

- Lightweight - 1/HDC Dosilara/Judi Tobias
2/5 Sassy/Lenore Mitchell
3/3 Rushcreek Quebec/Jane Ahlschwede
4/ Queen of -ZQ/Gay Ellen Fisher
5/ Locus Hill Dew Drop/JoAnne Greer
6/1 Model's Image/Holly Vielhak
/6 Damaaskazon/Gerda Pascusci
/2 Krugerand/Alice Pollock
/4 Ablaze Bi Ghali/Kristine Tischer



- Junior - 1/5 Miss Wapiti/
Jenny Mitchell
2/1 Mazada/Jessica
Martin
3/2 Pegasus/Daniel
Haines
4/3 Misty Candy Jet/
Danny Morris
5/4 Justa Frosty Lark/
Wendy Fisher

REGION III BENEFIT RIDE

After numerous changes in camp and trail locations, the Region III Benefit Ride finally happened at Mike & Laurie Butterfield's Indian Park Ranch, Sedalia, CO, on August 22 & 23, 1987. Rainy weather decided to pay us a visit after being away for over a month. Riders and management were physically wet, but their spirits were not dampened. Everyone pulled together and made a good recovery of the weekend.

Sunday brought fog so thick that riders were unable to see ribbons no more than 10 feet in front of them! Mud compounded the problems making planned, marked trails unstable. After much brainstorming over breakfast by Jeri & Laurie (our die-hard Ride Managers!), a Sunday a.m. briefing was held and riders were on their way.

The fun-loving attitude that came with our Vet Judge, Larry Bentley, and his wife Chris, both from Georgia...was very compatible with the easy-going feeling of the Ride. Patsy Tomb and Judi Tobias, our Horsemanship Judges, rolled with the punches and even donated their services for our region. Gene Naugle's borrowed idea of the Rock Drop to raise money for the Scholarship Fund was a great success, with the winning rock being dropped both days by Jemery Kaufman!

The Novice Sweepstakes Award was won by Shirley Trees, a first-time rider (we hope to see more of you and your hubby, Shirley!). Open Sweepstakes went to our special friend, Neal McKinstry... ..who was overwhelmed with the zealous congratulations he received from the once-again presence of "Miss Kitty and the Harlots"!! This wild bunch of ladies (more keep coming all the time!) seem to be making limited appearances in our region this year.

As the saying goes, "a good time was had by all" and Jeri & Laurie are already making plans for next year's Ride!

Region III Benefit Ride results for August 1987:

OPEN DIVISION

- Sweepstakes - Scharmoun/Neal McKinstry
Heavyweight - 1/ Scharmoun/Neal McKinstry
2/4 Tabour/Linda Adams
3/6 Nightwinds Dancer/Virginia Cole
4/ Sun's Dakota Parader/Laurel Whiting
5/2 Dusters Image/Dick Witter

- 6/1 Lark/Jill Talbot
/3 CR Krystalette/Pat Jubb
/5 Silver Springs Derek/Chuck Keil

(continued.....)

(REGION III BENEFIT RIDE....continued)

Lightweight - 1/4 Sharwif/Barb Jagoda
2/ Sassy Lenore Mitchell
3/ Ka Sirena/Jo Johnson
4/2 San Barraf/Kathy Morris
5/1 Aftamia/Ariel Schrader
6/ Tacca Tu/Beth Gingold
/3 Foxtton Teton/Thom Harris
/5 Awlanis/Cheryl Brooks
/6 Chaipeta Snow/Sena Fitzpatrick

Junior - 1/4 Miss Wapiti/Jenny Mitchell
2/2 Zarafa Moniet/Jemery Kaufman
3/1 Par Ali Hawa/Laurie Avila
4/3 Sir Rouge/Tanya Avila

NOVICE DIVISION

Sweepstakes - Lightning/Shirley Trees
Heavyweight - 1/ Lightning/Shirley Trees
2/6 Brown R. Foxy/Stacy McKelvy
3/1 Duchess/John Rowland
4/2 Boxcar's Tewa/Judd Adams
5/ Little Joe's Cameo/Glenn Kuhns
6/3 Damaaskazon/Jim Pascucci
/4 Rashammar/Vern Vobejda
/5 Ben/Don Herriot

Junior - 1/1 RV Dominica/Candice Avila
2/2 Cambridge Myria/Michele Waterbury
3/3 Misty Candy Jet/Danny Morris
4/4 Aba Daar/Aspen Butterfield
5/5 Mahzada/Michelle Mathews
6/6 Bob/Mary Jo Taylor

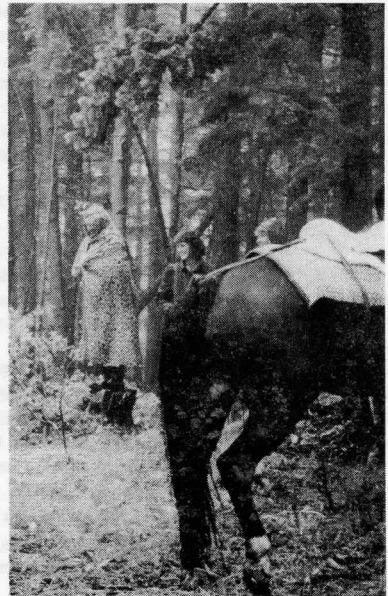
Lightweight - 1/ Scar's Canela/Catherine Zuck
2/6 JoJo The Traveler/Melinda Dunlap
3/ Khayomar/Cindy McNamara
4/3 Bilintar/Judy Miller
5/ Queen of -ZK/Gay Ellen Fisher
6/ Halizahn/Janet Enell
/1 Sunday's Shadow/Vicki Heniser
/2 Kaheeh Yuam/Susan McKelvy
/4 Wars Heritage/Cynthia Abshire
/5 Rahzan/Shawn Murphy

ODE TO PATSY TOMB

(with apologies to Joyce Kilmer)

I think that I shall never
see
A judge that looked more
like a tree,
A tree that did, for color,
wear
A yellow ribbon in its
hair,
Upon whose brow a bush was
lain,
Which helped protect it from
the rain.
A tree that patiently did
stand
With branches clutched in
either hand
And spied upon each horse
and rider,
Who gathered there to mount
beside her.
Poems are made by fools like
me
About a judge dressed like
a tree.

- Judi Tobias



TOP OF THE WORLD RIDE

The Top of the World Competitive Trail Ride was held on September 11 & 12, 1987 at the Resort Valley Ranch in Foxton, Colorado. The judges were Dr. Gene Naugle, DVM and JoAnn Christensen. There were 22 Open riders and 23 Novice riders attending this Ride.

Despite a chill and dampening thunderstorm during Friday's check-in, the weather along the north fork of the South Platte River near Foxton, Colorado turned out to be bright and sunny on Saturday and Sunday for the horses and riders. Forty-seven riders took off Saturday morning and despite erroneous directions from the starting timers and several false starts most riders met the challenge of a fast-paced trail through the mountainous terrain surrounding the river.

Sunday's trail traversed Saturday's (in part) and gave Top of the World the distinction of having the longest two-miles at the end of the trail, ever marked. Our apologies to the riders who thought they were on the homestretch! Sweepstakes winners were Susan Witter on her grey Arabian gelding, Gator Shane, in the Open Division....and Larry Tobias on Shadow Play in the Novice Division. (Editor's Note: This rider was thrilled to hear her first elk's call EVER at this beautiful Ride site - the elk's rutting season was in full swing with their trumpeting calls being heard each night and early mornings.)

Top of the World Ride results for
September 1987:

OPEN DIVISION

Sweepstakes - Gator Shane/Susan Witter

Heavyweight - 1/1 Silver Springs
Derek/Chuck Keil
2/3 Nightwinds Dancer/
Virginia Cole
3/2 Lark/Jill Talbot
4/5 Gwenifer/Ron
Kruczek
5/6 Miss Eternal Eddie/
Elsie Ryland
6/4 Sun's Dakota Parader
/Laurel Whiting

Lightweight - 1/2 Gator Shane/Susan Witter
2/4 San Barraf/Judy
Wise
3/1 Sharwiy/Barb Jagoda
4/3 Aftamia/Ariel
Schrader
5/ Bronze/Merle
O'Donnell
6/6 Abigail/Peggy Link
/5 RV Dominica/Laurie
Butterfield



Open Sweepstakes winner, Susan Witter, on Gator Shane.

Junior - 1/1 Par Ali Hawa/Laurie Avila
2/2 Sir Rogue/Tanya Avila
3/3 Brittle/Brandy Naylor

NOVICE DIVISION

Sweepstakes - Shadow Play/Larry Tobias

Heavyweight - 1/6 Shadow Play/Larry Tobias
2/1 Par Rasul/ Debbi Jablonski
3/4 Arrendondo Del Flor/Terry Miller
4/3 Advocate/Steven Pettinger
5/5 Nifty Lori/Kim Hayzlett
6/2 Silent Asia/Marty Marten

Junior - 1/3 Cambridge Myria/Michele Waterbury
2/1 Montar/Amanda Miller
3/5 Mahzada/Sherly George
4/2 Aba Daar/Aspen Butterfield
5/6 Mr. Devil Twist/Robin Voth
6/4 Bob/Mary Margaret Knudson

Lightweight - 1/5 La Triana Conarima/Judy Van Valin
2/HDC Dosilara/Judi Tobias
3/4 Scar's Canela/Catherine Zuck
4/ Queen of -ZK/Gay Ellen Fisher
5/ Khayomar/Cindy McNamara
6/2 Gypsey/Kathryn Utke
/1 /Susan McCarthy
/3 /Shawn Murphy
/6 /Kristin Pettinger

THE XIV ANNUAL VAN VLEET MEMORIAL RIDE

The XIV Annual Van Vleet Memorial Competitive Trail Ride was held on September 26 & 27, 1987 in the Golden Gate State Park in Golden, Colorado. The weather could not have been better for a Fall Ride in the Rockies! The aspen trees were in their peak color and they were as intensely golden as they could be, with deep green evergreens, a brilliant blue sky and white clouds for a background. It didn't rain or snow, and daytime temperatures were in the 70's, then in the 40's at night. Ride headquarters was Reverend's Ridge Campground (9,200 ft.), with individual camping spots, heated restrooms, AND hot showers! Although the number of competitors was modest (30), they all had a wonderful time. The timing of this Ride had been adjusted from last year (which was the first year the Ride was held in this park) in response to rider feedback, and seems to have been close to perfect for both Open and Novice divisions alike. The trail has lots of variety changing in altitude from 8,200 to 9,600 feet, many stream crossings, meadows and beaver ponds.



A novel aspect of this Ride is a park requirement to minimize the use of ribbons (out of respect for the hikers and naturalists who regularly use the Park)...so, ribboning was restricted to only marking turns and trail crossings. Even with fairly detailed maps and 12-15 marked timing points, this presents a challenge to competitors to study and use their maps well. On Saturday, only two riders got off trail but still finished with 7 minutes to spare. Sunday found 10 riders missing the first P&R, but again they successfully (with some help from Open riders) got back on track and made up their time.

The judges were Dr. Chuck Gasaway and Bev Tibbits, who had a great time scampering around the Park thinking up great obstacles like backing up a creek bed and side-passing to tie a ribbon in a bow to a tree. Many thanks go out to all the workers who volunteered their time and efforts to put on this fun Ride! Special thanks to Judd Adams, Ride Manager, who (among many other tasks) drove the judges all over the Park getting them to the best spots to observe horses and riders (sometimes with only minutes to spare!). Don't miss this gloriously colorful and challenging Ride next year around!

Van Vleet Memorial Ride results for September 1987:

OPEN DIVISION

Sweepstakes - San Barra/Kathy Morris
Heavyweight - 1/1 Lark/Jill Talbot
 2/2 Silver Springs Derek
 3/4 Nightwinds Dancer/Virginia Cole
 4/3 Raf's Rainbow/Dean Schrader

Lightweight - 1/2 San Barra/Kathy Morris
 2/1 Sharwif/Barb Jagoda
 3/6 Aftamia/Ariel Schrader
 4/5 Gator Shane/Susie Witter
 5/3 RV Dominica/Laurie Butterfield
 6/4 Pas Rafaga/Judy Wise

Junior - 1/1 Tar Ali Hawa/Laurie Avila

NOVICE DIVISION

Sweepstakes - Scar's Canela/Catherine Zuck
Heavyweight - 1/3 Fantasia Tasheema/Carol Knauss
 2/4 E.T./Jim Wright
 3/1 Rashammar/Vern Vobejda
 4/2 Damaaskazon/Jim Pascucci
 5/5 Silent Asia/Marty Marten
 6/6 Fantasia Flambeau/Joyce Leitner

Lightweight - 1/2 Scar's Canela/Catherine Zuck
 2/4 Halizahn/Janet Enell
 3/3 Wars Heritage/Cynthia Abshire
 4/1 Khayomar/Cindy McNamara
 5/6 Hoss/Lynette Johnson
 6/5 JoJo The Traveler/Melinda Dunlap

Junior - 1/1 Sir Rogue/Candice Avila



NOTICE



EDITOR'S NOTE: These are the last of the 1987 "Ride Write-Ups". Please be aware these are not "official" results! These are just the immediate standings I have received within two weeks after a Ride, from the Ride Secretaries of each Ride.

-JET



WINTER HELPFUL HINTS!



...Always cool and dry your horse well after a winter ride to avoid him catching cold or pneumonia.

...Take shoes off so the ice doesn't build up in their feet.

...Shelter is essential! But "shelter" isn't necessarily a barn. It can be a canyon, a hill of the right shape, a thick stand of trees or a three-sided shed facing the right direction - any cove to the lee of the storm out of driving rain or snow, any windbreak where a horse can avoid being swept away in a Boulder wind!

...Keep the horses environment the same whether there's a storm or not, don't suddenly blanket a horse if he's not use to it - he could overheat and then get chilled - big trouble! Most horses winter out fine and with some shelter to retreat to they handle Mr. Winter okay.

...It is a good rule not to leave the halter on in the winter-time since most of us don't visit the pasture as often.

...Feeding habits in the winter might need to be changed; since every horses metabolism is different some loose weight with the cold so watch them carefully, always remember to "gradually" increase grain so as not to overload.

...Water in the winter is very "important". Horses do drink less in the cold months but can become impacted very easily without water and an impacted horse is in grievous danger of death.

...One last tip for our beautiful four legged friends, warm up that cold bit in your hand. If that icy thing is frigid to your touch, imagine how it would feel sticking to your tongue!!!



MAKE HIM WARM AND COMFORTABLE



... REMEMBER WHO DID MOST OF THE WORK

MORE NATRC CLINICS ALWAYS NEEDED!

Let's get even more people involved in Competitive Trail Riding! NOW is the time to start thinking & organizing trail ride clinics for the Fall 1987 and the Winter & Spring of 1988.

Region III has available trail ride videos and a slide show to loan to your clinic. We have also put together a TRAIL RIDE CLINIC PACKET to assist you.

Trail Ride Clinics are an excellent way to help Novice riders and to stimulate more interest in our sport. For more information and to get the packet, please contact our Region III Clinic Chairpersons:

Pat McCoy in Durango, CO at
(303) 259-4386 or,

Judd Adams in Boulder, CO at
(303) 494-4241.

MANDATORY REGISTRATION PAPERS

REMINDER: In order to be eligible for Breed Awards at each Ride, you must send in with your Ride Entry a copy of your horse's registration papers. These copies will be returned to you the day of the Ride.

MEMBERSHIP COMPUTER LABELS NOW OFFERED

Pat Militzer is now in charge of all computerization of membership for Region III. She is also now doing membership labels for the Newsletter, and she can also make labels for Ride Chairmen and Clinic organizers. Lists can offer much information and can be categorized by Districts, zip codes, and include people who rode in any Rides within the past two years. This can be helpful to solicit participants for all Region III/NATRC events. The fee is \$5.00. Call or write Pat at:

Pat Militzer
1190 Marshall Road
Boulder, CO 80303
(303) 494-8219

SPECIAL NEWSLETTER SUBSCRIPTION

Anyone interested in receiving just the Region III Newsletter, without becoming a Region III or National NATRC member, may do so. It will cost \$8.00 to subscribe to the Newsletter alone. Please contact Ike Mosgrove at 303-495-2906.

VERIFYING POINTS & MILEAGE

REMINDER: It is the responsibility of the rider to verify their points and mileage with the appropriate Point Secretary prior to October 15th of each year. Otherwise, you must accept the points and mileage as calculated by the Point Secretaries.

Please send your calculated Rider & Horse points, and your calculated Rider & Horse mileage at the end of the 1987 ride season just for Region III to:

Pat Jubb
3455 Hartsock Lane
Colorado Springs, CO 80907
(303) 574-8522

ADDITION: Past members who do not renew their Region III membership by June 1st of each year will have to pay an additional \$15 secretarial fee if they wish to have either their horse's or rider's points & mileage recorded.

NEW RULING

The Region III 1987 Board of Directors voted on a new rule as of January 1987:

June 1st of each year will be the cut-off date for the Newsletter to be sent out to Region III members who have not yet rejoined. National members (but not yet Region III members) that are in our Region, will get two complimentary Newsletters then no more unless they join Region III.

B
i
t
s
&
P
i
e
c
e
s

MORE "BITS & PIECES"....

SOME BUSINESS ACCOMPLISHED FROM THE JUNE NATIONAL

BOARD MEETING:

- ** A fifth issue of HOOFPRIENT will be printed, in addition to the quarterly issues.
- ** \$4000.00 has been received from the Sue Bretag estate to the NATRC Foundation.
- ** Update on donations to the Scholarship Fund (by Region): Region I = \$2956.00, Region II = \$0.00, Region III = \$329.50, Region IV = \$837.00, Region V = \$25.00, and Region VI = \$25.00.
- ** Bonnie Kaufman will be the Ride Evaluation Secretary in 1988.
- ** Region III Worker patches are completed (bars indicating hours/points earned).

RIDE CRITIQUE RESPONSE

Did you really like a recent Ride you attended? Did you have a few suggestions for the management to improve on a Ride for the next year around? Do you want to see a certain judge come back to our Region and judge you again? If you answer "yes" to the above questions (and any others you might have!)...**please, FILL OUT YOUR RIDE EVALUATION FORMS AFTER EACH RIDE YOU ATTEND AND SEND THEM IN TO THE NATRC RIDE EVALUATION SECRETARY!!** Your comments can only help Ride Management improve on their Ride each year. Try and do these evaluations as soon as you can right after the Ride (it stays fresh in your memory that way). Judges and Ride Managers do see these evaluations in condensed formats....**so, please help them out and send the forms in!!**

SOME SHARED THOUGHTS FROM EPCHC...

- ** The Pike's Peak Range Riders recently donated \$1200 and a ton of hay to support Acts 19:11. The money will be used to help pay expenses for the group to attend Competitive Trail Rides, an activity which gives these youngsters a goal to aim for when working their horses.
- ** Tracy Naugle (a current NATRC/Region III member) is the first recipient of the Cavalier Memorial Scholarship. This scholarship is available to Cavalier members who are studying veterinary science and animal studies. However, non-Cavalier members may also apply. For more information on 1988 scholarship applications, contact Ike Mosgrove at (303) 495-2906.
- ** CSU is looking for suitable horses to be used for their riding classes as part of the Equine Science Major. If you have a sound, healthy, reliable riding horse you would like to donate, call (303) 491-8373.

Hats Off to The USET!



Over the past three decades, America's horse lovers have had many opportunities to applaud the accomplishments of the United States Equestrian Team. They've cheered our riders and drivers on, and swelled with pride as the Star Spangled Banner has been played in acknowledgement of victories in Olympic and Pan-American Games, World Championships, and other major international competitions.

During the past thirty-odd years the USET has established itself as a major power in the world of equestrian sport. Our Team's accomplishments include 19 Olympic medals (including a remarkable five out of a possible twelve at the 1984 Los Angeles Games); 15 World Championship medals, and no less than 39 medals in Pan-American Games competition.

We all know, however, everyone wants to beat a winner; today the USET faces the strongest challenges ever to the position it has earned through the years. Our future success depends not only on our riders, drivers and horses, but also on our ability to continue to field the best possible teams, without cutting corners for economic reasons. And, in this, we'll need your help. We hope that you will support the USET generously as you have in the past.

Hopefully, with your support, we'll be doffing our hats at the Pan-American and Olympic Games, and the next World Championships to show our pride in the next generation of USET victories.

Be there with us. Join USET.



**UNITED STATES
EQUESTRIAN TEAM, INC.
Gladstone, New Jersey 07934**

I would like to become a member of the United States Equestrian Team, Inc. Please enroll me in the category I have checked below. My payment is enclosed. Check here if under 18 years of age. ☐

Name

Street

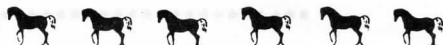
City

State Zip

- ☐ Gold Medal Club \$1,000 or more
- ☐ Sustaining Member \$500
- ☐ Contributing Member \$100
- ☐ Regular Member \$25

Checks should be made payable and mailed to:
UNITED STATES EQUESTRIAN TEAM, INC.
Gladstone, New Jersey 07934

ALL CONTRIBUTIONS ARE TAX DEDUCTIBLE



NATRC - A Positive Experience?

by Patsy Tomb

The growth of NATRC has always been of special interest to me. I am always on the look-out for ways of introducing new people to our sport and thus developing the potential for new friendships. A tightening of excitement wells up inside of me when I hear of new people who want to put on a Ride or introduce a whole new club to our wonderful sport.

Months of hard work and effort are put into organizing a Ride, often with only one or two experienced NATRC people willing to truly commit to the endeavor. As any manager or trail master knows, lots of hard work goes into a Ride only to be destroyed by the whims of nature; weeks of hot weather turn to cold and rainy the day of the Ride; "forest critters" decide that a major portion of their diet this week is surveyors ribbon; or, difficult land owners have their say. Management counts on people to show up who don't; gates get locked; and, occasionally there is a bit of guerrilla warfare. You can count on the worst happening, so greet it with a smile.

In spite of it all, the day dawns and riders begin to arrive. Yep, I have seen the other side of the coin too. Markers to camp pilfered; engines overheat; flat tires; and, trucks that simply won't make it up that last grade. Months of conditioning for naught when your farrier misplaces a nail or your horse misplaces a foot on a inconsiderate rock.

So many things must mesh together to see that "relationship develop between you (and your horse) to reach a high level of harmony as you enjoy the recreation of riding the countryside's trails closer to nature than is likely in everyday life." (Rider's Manual, 1981, pg.1). But wait, I sense a bit of discord. Harmony should exist not only between horse and rider, but also between rider and management. Everyone is working to do their best: riders, workers, management, horses, and judges. Everyone is aware that this is a judged event. The Rider's Manual also mentions this is "faster than a 'pleasure ride' in order to provide a test."



Make friends.....

And so what happens? Yes, we do get tired and that "we" does not mean just riders. The heat of the day, the pressure of competition, concern for our horses...often bring out the worst in us. In our region (and probably in other regions too) we are blessed with management who are pleased to deal with and be conscientious about putting on a good Ride that stresses the horses. The day of the Ride many people who have never even seen a trail ride show up to help with P&Rs, time, drive, carry water, etc. No expenses are paid for them, and they are often given only a hard sandwich and a hot drink.

And here, my compatriots, is where we loose it!!! Workers

are briefed to be as courteous as possible to riders. But, perhaps the riders should be briefed to be considerate to the workers. Who reminds experienced Open riders that people are here observing them, trying to decide whether or not to join the organization? This is their first taste of our good times. What are they hearing? Complaints often rapidly deteriorating into a highly infectious malady I reluctantly call "B----ing" (pardon the language). This seems to be highly contagious as "X" rider and "Y" rider are proceeding down the trail together. "X" begins to complain, but we all expect that of "X" so most either listen politely or tune them out. Gradually "Y" catches the insidious malady and the situation deteriorates. The focus of this malady is usually with regard to management, organization of the Ride or joint decisions with judges. A judged event? Faster than a pleasure ride? We must do all we can to ensure that both happen. Otherwise,

(continued.....)



.....not enemies!!

can real judging take place?

It is disappointing and embarrassing to me to hear and see such conduct in front of new people to NATRC. It was especially poignant when a P&R team member who was observing all this for the first time, seriously contemplating giving us a try, approached me after a Sunday forced trot, and said..."Do these people realize the image of their organization and sport that they are portraying? Yesterday I was excited about this sport and thinking maybe I'd give it a try. If these are the top riders in your organization, someone ought to make them aware." (Not a direct quote, but close). I said I would write the article. Here it is.



....and, good manners are essential.

If complaining about obstacles, means of providing stress or trail markings, etc. enters your mind, please think about it to yourself, mull it over. Ask yourself if perhaps your feelings are being influenced by the heat, your lack of rest or any number of things. Then if you must say something, do it in an appropriate way to the appropriate person. Rule clarification should be addressed to the Ride Steward; complaints to management or to the judges... never to the workers. Grousing as you go down the trail (those trees have ears!), or as you stand in line at a P&R, snapping unkindly at P&R teams or timers...brings you no goodwill and certainly does not make NATRC a positive experience.

- Patsy Tomb

(Editor's Note: Patsy Tomb has been active with NATRC and Region III since 1973 as a worker, rider, Ride Chairman of 10 Rides, former National Board Member and current Regional Board Member, and Horsemanship Judge.)

Note from our 1988 National Convention Committee....

The 1988 NATIONAL NATRC CONVENTION will be held in Colorado Springs, Colorado on February 12th & 13th, 1988.

Region III is soliciting ads for the 1988 National Convention program which will be distributed to approximately 200 people at the convention.

The program will be 8½" x 5½" on non-glossy paper, and the Ad Rates are as follows:

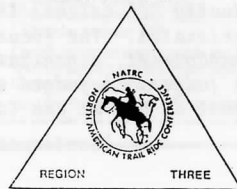
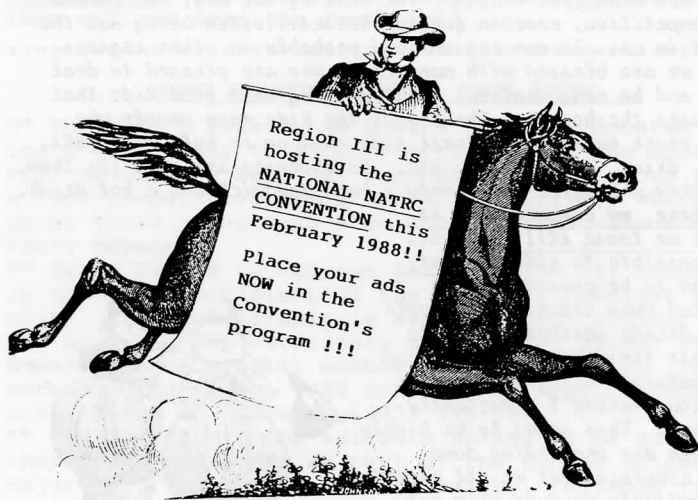
\$25.00	- Full Page
\$15.00	- Half Page
\$10.00	- Quarter Page
\$ 5.00	- Business Card size

Ad Deadline is December 1st, 1987.

If an ad has a photograph, it must be sent camera-ready - black & white photos only, please.

All ads and/or inquiries, may be directed to:

Pat Jubb
3455 Hartsock Lane
Colorado Springs, CO 80907
(303) 574-8522



August 21, 1987
Sedalia, Colorado



- Membership: There are 143 new members - discussion on \$15 late fee because difficult to tally points, past minutes need to be rechecked.
- Newsletter: Jill stated that printing problems all set now, Spring issue was free to print because of this - ad in BCHA Directory out now & looks great - Jill will send each Newsletter to HOOFFPRINTS Editor with circled events to be printed - 5th Issue of HOOFFPRINTS now offered more ads and photos needed for Newsletter.
- Publicity: Laurie mentioned booth to be set up at "Equitana" in Colo. Sprgs. on Sept. 20th - Audrey put on a clinic at Gallup, NM and these people are interested in putting on a Ride next year, Audrey to get Ride Packet to them - Judi told us that Idaho Arab Club interested in putting on a Ride & they want to rent our bibs & stethoscopes, fine as long as dates don't conflict w/our Rides and special fee involved - Marty feels "Competitive Trail Riding" should be spelled out on all publications - Judi would like to see more articles on our sport in Arabian Horse Express, she needs Blk. & Wh. photos.
- Historian: Mary Hockett gave a plea for articles as she has only received one since April.
- Awards: Ike showed us examples of Worker patches and jackets - motion passed that we order the lined jacket for 5000 points as required.
- Annual Seminar/Meeting Planning 1987: Mary gave us agenda - registration forms to be mailed - Lou reminded us that new & old Board members must attend this meeting.
- Region III Benefit Ride: Laurie said all "OK"!
- Supply: Pat Jubb said all is fine - managements are returning everything quickly.
- Nominating Committee: Gene Naugle has sent out letters to Dist. Reps. stating that they have to get names for nominees - we also need one Nat'l. Board Member to vote in.
- Nat'l. Convention Planning: Pat wants 10 door prizes from each Bd. Member - theme is "Rendezvous in The Rockies" - master press release will be sent to each Board Member to put in local papers - need ads to cover costs - discussion on special price for 4-H kids to attend Sat. session.
- Nat'l. Board Member Report: Ike handed out questionnaire - motion passed for Reg. III to support the 3rd Class "Intermediate" that Bev Tibbetts recommended - motion passed that we recommend the Nat'l. Bd. rescind the name change Section III 2. (from Novice Division to Novice/Pleasure).
- motion passed that we accept Ike's recommendation as per Family Members riding a Ride - motion passed that Reg. III BOD feel that stewards should not be related to Management or judges, and this motion be informed to Nat'l. BOD by our Reg. III Nat'l. Bd. members - motion passed that Nat'l. Board does not endorse any product (helmet issue) on our recommendation.
- Sue Bretag Bequeathment: Marty told us \$4680 was bequeathed to us - discussion on use of this money to issue at October mtg.
- Scholarship Fund: Gene said total is now at \$9692.00 but most of it is already committed and we need more he suggested the "rock drop" - motion passed to try this contest at Reg. III Benefit Ride, it was done with lots of fun and a great donation - Oatsy suggested a Stallion Raffle & auction too.
- Brochures and holders: Marty brought an example of brochure holder, motion was passed that we buy 50 of these.
- Ride Critiques: Jill wanted to know who gets these critiques, Pat Jubb explained Pat Wasmund gets them then summarizes them and sends summary to judges and management of the critiqued Rides, this is done to weed-out irrational and thoughtless comments by riders, Gene said questions on individual critiques will be answered.
- Ride Management Burn-out: Jill felt that a Nat'l. Championship should include Worker Points as well, discussion ensued.
- Ken Schleman Challenge: Marty talked with this man about a challenge between his riding group and Region III riders, taking turns at each other's ride sites - Mr. Schleman will further contact us on this matter.
- New Ideas From Other Regions: Jill suggested Reg. III doing a Judges Corner in the Newsletter describing judges from other Regions to share information about them, as done in Region IV, motion passed to do this - Region I has an Adopt-A-Novice program that can be done at any of our Rides by the Management (tag or mark first-time riders and have Open riders help them) - another idea was to use Boy Scouts to cook food, pull ribbons, etc. as in Region I - one Ride in another Region painted rocks to mark trail and then just had to turn the rocks over after the Ride - motion was passed to give free dinners to each Ride Chairman at the year-end seminar
- Marty wanted Jill to put these ideas in newsletter (here they are!) and he will plan to introduce all Ride Chairman at the seminar.
- Safety Riders - motion passed that Lou Pavetti will draw guidelines for Safety Riders and send them to Pat & Judd to be included in Ride Management Packets.
- P&R Guidelines - Mary brought up how to handle incidences between P&R people and riders, it was suggested we put an article in Newsletter and Patsy had just done this - discussion ensued.

Meeting adjourned!



- reprinted from WILEY WORKS.

DO YOU KNOW YOUR FELLOW COMPETITOR?



"Well...do you know your fellow competitor?!"

Although I had ridden Shetlands in carnival pony rides when I was barely old enough to walk, my first unsupervised horse experiences were riding the family lpow horse around the pasture at the age of four. My mom would put me up on "Sugar" with a halter and rope and off to other chores. The main problem with that adventure was that Sugar quickly learned that she could get rid of me by merely lying down!

My first real riding horse was a 23 year old mare named Shebee, who didn't much like being ridden either. Although I had a soft old plantation saddle, to which my father had affixed a brass doorknob to serve as a saddle horn, I preferred to ride bareback. Mounting was a problem however, because Shebee refused to allow herself to be positioned near a fence, rock, or hill. So I would find a tasty clump of clover, or preferably alfalfa, wait until she put her head down for a bite, and then lay over her neck (see photo). When she raised her head, I was on her back and off we'd go!

We lived on a 450-acre cattle ranch on the Pend Orielle River, nestled in the Rocky Mountains north of Coeur d'Alene, Idaho. My route to elementary school consisted of a long walk to the ferry, another long walk to the highway and a yellow school bus to Priest River. Luckily I didn't have to go to school from November to March because the ferry couldn't run when there was ice floating on the river.

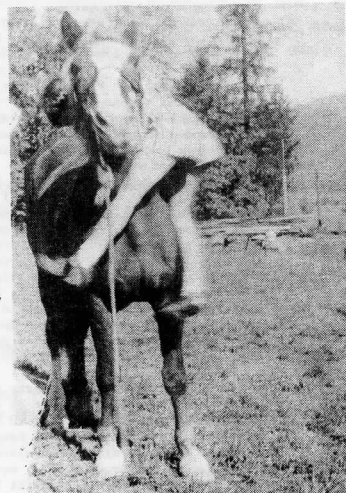
Spring was wonderful. Longer, warmer days brought cute new calves, foals, goslings, chicks, baby rabbits, puppies, kittens, flowers, bluebirds and meadowlarks. Milking 100 head of Holsteins twice a day, moving irrigation pipe, tending all the babies and the vegetable garden was enough to keep us all busy, happy, healthy and strong. In addition, the Ranger brought us an abandoned fawn or two to raise every summer.

The big summer event in Priest River was the Loggers' Celebration in late June. We'd wash our horses, put them in the truck, and bounce our way to town. We'd ride in the parade, a kids' race, a few gymkhana events, and then ride the ferris wheel and merry-go-round. The loggers had many thrilling contests with axe, crosscut and chainsaw, but my favorite was log-rolling on the freezing cold river.

It was tough to make a living in that part of the country in the 1950s. When the price of milk fell, we sold the Holsteins and bought Herefords. My dad taught agriculture at the University of Idaho Extension in Sandpoint, logged part of our mountain and looked for uranium with a Geigercounter. Eventually when I was turning 13, we sold all the animals and moved back to California.

I missed the animals and pines and wildflowers and meadowlarks...but, it would be twenty-five years before I would own a horse again. I went through high school in Sacramento, college at the University of California, married, worked to help my husband through graduate school, raised a daughter, was an analyst for the Illinois legislature, earned a Master's degree in operations research, was a staff director for the Connecticut legislature and finally was moved back West in 1979 by the National Conference of State Legislatures headquartered in Denver. This month marks my 15th year working with legislatures, though the past four years have been in the private sector as a regional manager of government relations with AT&T. This job gets me back to the country I love in Idaho, Montana and Wyoming (as well as practically everywhere else, including this summer, Hawaii and Europe).

But most satisfying to me is living in Boulder with my family, 3 beautiful Arabians, a beloved dog and two cats on a couple of acres with a view of the Divide and the music of meadowlarks. We started NATRC with the Van Vleet Ride in 1982 and, in spite of all the usual first-time rider catastrophes, we were hooked. Twenty-five years was a long time to wait to get back to horses... I'm just grateful the Rocky Mountains, NATRC, and an equally enthusiastic husband were all part of the picture when the time came.



(swaggy epurT)

WELCOME!



We would like to thank all the many new people who have recently joined NATRC/Region III!! We appreciate your interest in our sport, and we hope to see you all on the trails!

ALSO....a special thanks goes out to all the present members that have been diligently renewing their memberships!

We would not exist without you!

WELCOME BACK to Region III (formerly a Junior Member):
Laurie Gaines Ft. Collins, CO (D-3)

WELCOME as a senior Region & National Member:
Christy Cumberworth Farmington, NM (D-5)

WELCOME as a Region III & National Member:
Marie & Isaac Weaver & Family Bloomfield, NM (D-5)

WELCOME as a Region III & National Member:
Kathy Tate Albuquerque, NM (D-5)

WELCOME as a Region III & National Member:
Joyce Knight Ault, CO (D-3)

WELCOME as a NATRC National Member:
Robin Claxton Bosque Farms, NM (6/88)

WELCOME as a NATRC National Member:
Don Forssee & Family Gallup, NM (7/88)

Please note on your address label when your National Membership expires! If you are not an up-to-date National Member, you are not eligible to be a Region III Member...even if you have paid Region III membership dues. Renewals for 1987 Region III membership were due no later than June 1st, 1987...those delinquent Region III Members must now pay an additional \$15 late charge if they have not renewed!



Change of Address

Have you moved or changed your address? Please let us know your new address as soon as possible to insure your receiving the Region III Newsletter.

NOTICE TO REGION III/NATRC MEMBERS FROM YOUR REGION III MEMBERSHIP CHAIRMAN

Card reminders have been sent to REGION III DUES PAYING MEMBERS, whose NATIONAL NATRC MEMBERSHIP has, or is about to elapse. It is important that Region III/NATRC members keep their National NATRC Membership current to be eligible for annual year-end awards, and Region III voting privileges.

CURRENT MEMBERSHIP BREAKDOWN FOR REGION III (1987):

Total Memberships:	146
Family:	52
Single:	92
Junior:	2

BREAKDOWN BY REGIONS:

District I:	20 (11 Family; 9 Single)
District II:	55 (21 Fam.; 32 Single; 2 Junior)
District III:	29 (6 Family; 23 Single)
District IV:	5 (1 Family; 4 Single)
District V:	19 (6 Family; 13 Single)
District VI:	18 (7 Family; 11 Single)

REMEMBER Region III Memberships are based on the calendar year...January through December. NATIONAL NATRC MEMBERSHIPS are on a 12-month basis from the month you join or renew.

Ballots for the 1988 Board of Directors will be sent shortly to current Region II/NATRC Members, whose National NATRC Membership is current!

******REMINDER:** All Region III/NATRC Members need to complete the questionnaires sent out to you by your National Board Members: Dr. Gene Naugle, Ike Mosgrove and Bonnie Kaufman. Please send your completed form to either Ike or Bonnie if you have not already done so. THESE MATTERS WILL BE DISCUSSED AT THE REGION III SEMINAR IN ALBUQUERQUE, AND VOTED ON AT THE NOVEMBER 7th NATIONAL BOARD MEETING IN KANSAS CITY, MISSOURI. We appreciate your suggestions, inputs and ideas!



PUTTING ON A COMPETITIVE TRAIL RIDE

Have you ever wondered what it takes to put on a competitive trail ride? Perhaps you would like to know, maybe you might even wish to help out.

A competitive trail ride is almost totally a volunteer effort, the exception being the vet judges who are compensated for their participation. Other than that, the 30-40 people who put on the ride are volunteers. There are three categories of workers: those who work both before and during the ride; those who work only before the ride; and those who work during the ride.

Ride Preparation and Execution

Ride Manager: has overall responsibility for the ride, which includes finding the ride site, obtaining permissions to use the land, recruiting the judges and other ride management, planning and coordinating all activities, developing and managing the budget.

Ride Manager Apprentice: a person interested in becoming a ride manager - may hold one of the other ride management positions or serve as general assistant to the ride manager.

Ride Secretary: is the primary assistant to the ride chairman, including the planning of the ride, ordering materials and supplies, sending out and receiving ride applications, preparing rider score cards and judges notebooks, keeping track of expenses and income, etc.

Ride Secretary Apprentice: a person interested in becoming a ride secretary - serves as general assistant to the ride secretary.

Trail Master: responsible for trail planning which includes a variety of duties, depending upon the specifics of the ride (some of the duties may be handled by the ride chairman). The duties fall into two categories: ride preparation and ride execution. Ride preparation duties include selecting ride location, specific trails, identifying judging obstacles and P&R spots, coordinating trail marking and timing, preparing the trail maps and instructions to riders. Ride execution includes briefing the riders on Friday and Saturday nights regarding the timing, obstacles, etc. and arranging for the P&R teams and judges to get to their appropriate locations.

Ride Preparation Only

Trail Markers: people who place ribbons on the trail to identify where the trail goes. They need not be experienced competitive trail riders but it helps if they have been on a ride because they have a better sense of how frequently and where to put ribbons to make it easy for competitors to keep on the trail and not get lost. Typically it will take several days of effort by many people to get the trail properly marked.

Trail Timers: should be experienced riders who are responsible for determining how much time it should take to get from

one point to another. Both open and novice timers are needed since the times are quite different for the two divisions.

Awards: the job of purchasing ribbons and soliciting other award items like halters, lead ropes, etc. to be given to the top placing contestants.

Publicity: writes/distributes articles to local publications, speaks to local horse groups and promotes the ride in as many ways as possible.

Ride Execution Only

Vet Judges: observe and evaluate how well the horses perform before, during and after the competition. This includes conditioning (e.g., pulse and respiration, hydration), soundness (e.g., leg flexion, soreness in back, girth, legs), and manners. Must qualify for this position by completing a written exam and serve an apprenticeship of several rides before judging a ride. If you know of anyone who is interested in becoming a judge, let us know and we will contact them to provide them with additional information.

Horsemanship Judges: observe and evaluate the riders in camp and during the ride, including safety (vehicles and tethering of horses in camp, keeping proper distance between horses on the trail), how well riders are helping their horses perform, etc. Must qualify for this position by completing a written exam and serve an apprenticeship of several rides before judging a ride. If you know of anyone who is interested in becoming a judge, let us know and we will contact them to provide them with additional information.

Judge's Secretaries: assist the Vet Judges and Horsemanship Judges, both open and novice. Secretaries accompany the judges during the entire competition, recording the judges observations on the score cards and at the conclusion of the ride assist in computing horse and rider scores to determine final placings.

Ride Steward: is a person with a great deal of NATRC experience and a member in

good standing who is responsible for (1) interpreting the rules to ride management or judges upon request by a rider; (2) conferring with ride management and judges in the event of a dispute, assisting them in a decision; and (3) providing NATRC with an "efficiency" report within 72 hours of the end of the competition.

Vet-On-Call: is vet who is available within a short period of time to provide aid to horses in distress. The ride vet is normally not expected to provide such assistance.

Farrier: is available in case a horse throws a shoe. Usually at least one horse per ride needs such assistance.

P&R Chairman and Workers: measure the horses' pulse and respiration (P&R) several times during the ride and submit data to the Vet Judge for evaluation of the horses' condition. P&R workers need not be experienced with competitive trail riding but the chairman must be.

Pre-Riders: leave before the competitors and follow the trail to make sure that ribbons are where they should be. Should therefore be knowledgeable of the trail and all turns so that they can tell when ribbons are missing and can replace them.

Safety Riders: follow after all competitors have departed, to provide assistance in the event of a problem. Should be versed in first aid, both horse and rider, and should be very familiar with the terrain, trails, and the best ways to get help.

Drivers of Vehicles: responsible for getting the P&R teams and judges to their observation points. Need to know the access roads. May need four-wheel vehicles, depending upon the terrain.

Worker Food: person(s) who prepare all meals for the judges, secretaries and ride steward and sack lunches for P&R teams and drivers.

Miscellaneous:

Weighmaster: is the person who carries the scales around to the riders to determine their weight with tack.

Timers check the horses out in the morning (typically at 30 second intervals), check them in and out at lunch, and in again at the end of the day.

"Emergencies" refers to someone who can provide assistance to disabled vehicles, trailer out disabled horses, etc.

Gate keepers may also be necessary if there are gates that need to be closed after riders have passed.

There are usually many other small jobs which have to be done to make a competitive trail ride successful.

Prepared by
Judd Adams



GOOD-BYE TO A FRIEND.....

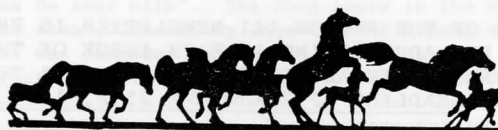
Jacque Jewkes, 43, of Green River, Utah, died in Mountain Home, Idaho and was buried August 13, 1987 in Green River.

She started NATRC in Green River in 1971 and competed in Region III for a few years before riding endurance. She rode mostly 50-mile races. Her horse, Razon, had 1000 miles of top 10 in 50-milers and 90% of the races he was best-conditioned. (Doc Pavetti's grey gelding is one of his colts.)

During a training ride the trail fell out from under her horse and Jacque and her horse fell 30 feet into a river. Jacque was killed, but the severely injured horse survived.

NEW! NATRC/Region III PAMPHLETS

NOW AVAILABLE...new NATRC/Region III pamphlets that can be distributed in local tack & feed stores, at horse events or to new interested people concerning our sport of competitive trail riding. These handouts are offered free-of-charge to Region III members wishing to help the interest and growth of NATRC/Region III. For more information and to get some pamphlets, contact: Jill Talbot, JET Arabian Ranch, 858 Marshall Road, Boulder, Colorado 80303 or call 303/494-2531.



NATRC MEMBERSHIP APPLICATION

NATRC offers four membership plans (Check Membership plan desired):

- ☐ 1. **FAMILY membership** (\$30 per year) Husband, wife, junior member (one vote)*
- ☐ 2. **SENIOR membership** (\$25 per year) Single adult member (one vote)*
- ☐ 3. **JUNIOR membership** (\$15 per year) Single junior member under 18 (no vote)*
- ☐ 4. **ASSOCIATE membership** (\$40 per year) Equine related groups or business (no vote)
- ☐ 5. **SINGLE Lifetime membership** (\$250) Any person of any age (one vote)*
- ☐ 6. **FAMILY Lifetime membership** (\$350) Husband, wife, jr. members (two votes)*

*Membership includes: Rule Book, Membership Card, Club Patch, Ride Schedule, Newsletters and eligibility to compete for NATRC Annual High Score Awards and Championships plus rider and horse mileage awards, and reduced ride entry fees. (PLEASE LIST ALL FAMILY MEMBERS) **DONATIONS TO NATRC ARE A TAX DEDUCTION.**

Name _____

Address _____

City, State and Zip _____

Telephone _____

Birthdate of Junior(s) _____

Amount Enclosed (\$) _____

Interests: ☐ Competing ☐ Judging ☐ Ride Management ☐ Helping on rides

NATRC MANUALS - \$4.00 each, plus \$1.00 postage & handling (1-3 manuals)

PLEASE CHECK: ☐ All three manuals
☐ Judges Manual
☐ Riders Manual
☐ Management Manual

NATRC SPECIALITIES
☐ NATRC PINS (\$3.00 ea.) ☐ 10" Decals (\$2.00 ea.)
☐ Rule Books (\$2.00 ea.) ☐ Patches (\$1.75)
☐ 4" Decals (2 for \$1.25) ☐ Jackets (\$25.00, \$3.00 post.)
☐ Hats \$4.50 (plus \$2.00 postage & handling, 1-5 hats)

PRICES SUBJECT TO CHANGE WITHOUT NOTICE.

Make checks payable to NATRC (U.S. Funds only) and mail to NATRC, P.O. Box 20315, El Cajon, CA 92021. Call 619/58-TRAIL. California residents please add 6 1/2% sales tax on manuals and specialties. (U.S. FUNDS ONLY.)



Rope Yourself A Deal

Read
The
Classifieds



THE HORSEMEN'S EXCHANGE

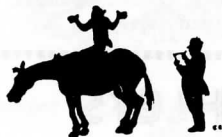
Sorry!

Nobody placed

any ads this
time around!

Nothing you-all want

to buy or sell?



THIS CLASSIFIED SECTION OF THE REGION III NEWSLETTER IS PRESENTED AS A SERVICE TO OUR MEMBERS. THE COST FOR ADVERTISING IN EACH ISSUE OF THIS NEWSLETTER IS LISTED BELOW. ANYONE INTERESTED IN ADVERTISING MAY SEND A TYPE WRITTEN AD OR FLYERS TO THE EDITOR BY THE DEADLINE OF DECEMBER 25TH, 1987.

***** WE NEED OUR MEMBERS TO SUPPORT THEIR REGION AND THE NEWSLETTER, SO PLEASE ADVERTISE!!! *****

1987 NEWSLETTER ADVERTISING RATES

DISPLAY ADS:

FULL PAGE/ \$50 (6½ x 8½)
HALF PAGE/ \$30 (6½ x 4½)
QUARTER PAGE/ \$15 (3¼ x 4½)
EIGHTH PAGE/ \$10 (3¼ x 2 1/8) *This is
also considered a businesscard-size.

FULL PAGE FLYERS/ that
you print & deliver to
us by the deadline = \$35.

CIRCULATION: 375

*Anyone wishing the Editor
to put together an ad for
their business or self,
will be charged an addition-
al \$10 graphic arts fee.

*If you wish to use a photo-
graph in your ad, it must
come to us camera-ready and
only in black & white.

CLASSIFIED ADS:

MEMBERS/ \$5.00 for 4 lines or less,
then \$1.00 @ line thereafter.
NON-MEMBERS/ \$2.50 for each line.

*8-10 typed words per line.

DEADLINES are listed in the Editor's
Box of each previous Newsletter.

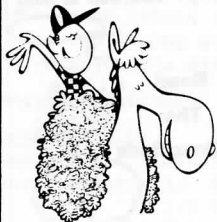
NEWSLETTER DISTRIBUTION SCHEDULE:

Fall Issue - November 1st
Winter Issue - January 1st
Spring Issue - March 1st
Summer Issue - July 1st

Please mail-in your ads typed
and double-spaced to:

Jill Talbot, Editor
JET Arabian Ranch
858 Marshall Road
Boulder, CO 80303

**You'll come out
the Winner.**



**If you place
an ad with us.**

NORTH AMERICAN TRAIL RIDE CONFERENCE

NATRC -REGION III MEMBERSHIP APPLICATION FOR 1987

Name: _____ District: _____
 [List both adults if a family membership] (see enclosed list)

Street _____ City _____ State _____ Zip _____

Home Phone (Indicate if unlisted) _____ Office Phone _____ Date that National Membership will EXPIRE _____

Members applying for Region III Membership must be NATIONAL NATRC MEMBERS

LIST JUNIORS IF A FAMILY MEMBERSHIP (Age 10-thru 17). If 17 on January 1, 1987 will Ride as a Junior for the 1987 RIDE YEAR. Juniors may ride upon reaching 10 anytime during the Ride Year.

FAMILY MEMBERSHIP: Husband and/or wife; and CHILDREN UNDER THE AGE OF 18.

SENIOR MEMBERSHIP: Any person 18 years of age or over.

JUNIOR MEMBERSHIP: Any person under the age of 18.

JUNIORS

BIRTHDATE

List Horse/s you or your family will be riding this season. (This information will help the Point Secretary.) [Do not use NICK-NAMES.] Be sure you use the same correct name on all Ride Entries. PRINT CAREFULLY.

<u>HORSE</u>	<u>BREED</u>	<u>AGE</u>	<u>REGISTRATION #</u>
_____	_____	_____	_____
_____	_____	_____	_____
_____	_____	_____	_____
_____	_____	_____	_____

Checks payable to:

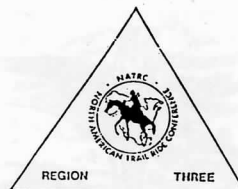
NATRC - Region III

FAMILY MEMBERSHIP \$8.00 [2 votes]
SINGLE SENIOR MEMBERSHIP-\$5.00 [1 vote]
JUNIOR MEMBERSHIP-\$3.00 [No vote]

AMOUNT DUE FROM ABOVE: \$ _____

OPTIONAL:

KEN BURKDOLL MEMORIAL FUND \$ _____
 RUTH TYREE MEMORIAL FUND \$ _____
 TOTAL AMOUNT \$ _____



YOU MAY KEEP THIS PORTION FOR YOUR RECORDS IF YOU WISH.

REGION III NATRC DUES PAID \$ _____
KEN BURKDOLL MEMORIAL FUND \$ _____
RUTH TYREE MEMORIAL FUND \$ _____
TOTAL..... \$ _____

MAIL TO: Iris Mosgrove, 10590 Egerton Road, Colorado Springs, CO. 80908. You will receive a RECEIPT upon payment. If not, please check to be sure we received your Application form and Membership fees. 303-495-2906

Please send any comments or suggestions you may have for NATRC-REGION III to any Board member or the address above.

Membership in REGION III is from January thru December. PLEASE NOTE: All Re-newals are due no later than 1 June or there will be a \$15.00 charge. Membership dues qualify the listed member(s) for REGION III HORSE and RIDER Year End Awards. Mileage is cumulative yearly as long as membership is maintained. New Members of NATIONAL NATRC who wish to become members of REGION III, must pay their Region III Membership fees by the weekend of the last ride of the 1987 Ride Season to be eligible for Regional Awards. Applicants for REGION III Membership must be NATIONAL NATRC MEMBERS. The Rules and By-Laws of the NATIONAL NATRC will be followed

OPEN HOREMANSHIP AWARDS: Open LIGHTWEIGHT and HEAVYWEIGHT Riders must have a minimum of 30 points for year-end Awards

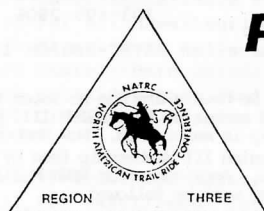
OPEN JUNIORS: Must enter three Rides. No Minimum points.

NOVICE HORSE AND RIDERS: Must enter a minimum of two rides. No minimum points required.

NATRC -
Jill E.
Jet Ara
858 Mar
Boulder

BULK RATE
U.S. POSTAGE
PAID
PERMIT NO. 97
Lafayette, CO

ON REQUESTED



REGION THREE NEWSLETTER