



### National Board Representatives

Doreen Portner  
435-259-6980  
Doreen.portner@natrc3.org  
Ride Mgr Recog.

Susie Witter  
719-495-4725  
Susie.witter@natrc3.org  
Ride Mgr. Coordinator

The Region III Newsletter is published bi-monthly. It is available by subscription to non-Region III members for \$10 per year.

Display advertising rates:

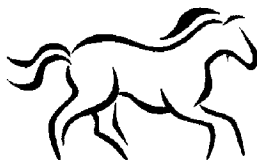
Full page \$50, half page \$30,  
Quarter page \$18, business card size \$10

Classified rates:  
Members \$5/ad  
Non-members \$10/ad

Send all letters, articles, payments, advertisements, photos, etc., to:

Kerry Bingham, Editor  
630 CR 3000  
Aztec, NM 87410  
Phone: 505.327.1579  
Email: kbingham630@msn.com

Deadline for articles, ads, etc. is the 26th of  
Jan., March, May, July, Sept. and Nov.



### REGION 3 COMMITTEES

JUNIORS  
AWARDS  
RIDE COORDINATORS

WEBSITE  
PUBLICITY  
BY LAWS/  
STANDING RULES  
MEMBERSHIP  
MENTORS  
BUDGET  
NEWSLETTER  
NATIONAL BOARD  
TRAIL ADVOCACY

RIDE MANAGERS  
HISTORIAN  
HORSE EXPO  
SAFETY  
SUPPLY  
TREASURERS  
SECRETARIES

KAY GUNCKEL  
TRACIE KORTHUIS  
TRACEY SCARLETT &  
CARLA RICHARDSON  
JEFF BROWN  
JIM WARD  
KAY GUNCKEL

KATHY BROWN  
LIN WARD & JERRY SIMS  
KATHY BROWN & LOIS DEITRICH  
KERRY BINGHAM  
SUSIE WITTER & DOREEN PORTNER  
DOREEN PORTNER, JAN COOK,  
SHERRI HALLIGAN  
SUSIE WITTER  
JANINE ANCELL  
LINELL MILLER  
SANDY HOLLIS  
DEE OVERHOLT  
MARC & KATHY SHANOR  
SHERRI HALLIGAN AND JAN COOK

## the Stirrup

Region III Newsletter  
September & October, 2006

### Region III NATRC Board of Directors

Kathy Brown, President, District 3  
kathy.brown@natrc3.org  
505-776-2575

Marc and Kathy Shanor  
Treasurers  
kathy.shanor@natrc3.org  
303-840-9369

Tracie Korthuis, District 1  
970-613-9455  
Tracie.korthuis@natrc3.org

Jim Ward, District 2  
719-783-9645  
jim.ward@natrc3.org

Jerry Sims, District 3  
505-326-6797  
jerry.sims@natrc3.org

Kay Gunckel, DVM, District 1  
Vice President  
970-667-2877  
kay.gunckel@natrc3.org

Sherry Halligan, District 2  
303-903-6138  
sherry.halligan@natrc3.org

Lois Deitrich, At-Large  
303-751-9179  
lois.deitrich@natrc3.org

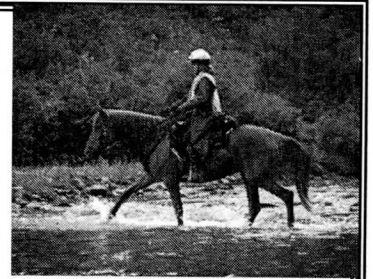
Lin Ward, At-Large  
719-783-9645  
lin.ward@natrc3.org

Jan Cook, At-Large  
303-356-2564  
jan.cook@natrc3.org

## *A Note From Our President, Kathy Brown*

Hi There!

We closed Region 3's ride year last week with the Chile Line –it was a great ride! The weather was perfect and we may have had too much fun with our 'Border Town' theme. We had 5 first time competitors and a guest from Region 4. Now is the time to plan next years rides – we already have 6 tentatively planned, but still need more – June is a month that needs a ride still, and we have at least one established ride that need someone to take over the management reins. Please contact myself or Tracie Scarlett if you would like to manage a ride in 2007. I have done two now, and I have to say the hard work is worth it – it is really neat to see a ride come together and to be the host of this weekend party for your friends. Heck, you might even make some money doing it! We have lots of support available to you, and there is even start up money for new rides.



The fall leaves are dropping, and that means election time! You should get your ballot soon in the mail – please take a moment to fill it out and return it. Our Regional convention is being hosted by Kip & Tracey Korthuis and they will do a great job! You can save a bundle by signing up early too so don't delay!

If you find yourself with a couple extra minutes now that the weather is cooling, please check in with Doreen or Sherri Halligan to see how you can help with the struggle to keep our trails open. A phone call or letter to your representative could mean the difference between open or closed trails for us all!

Thanks again for being such a great Region and making it so easy to be your president,

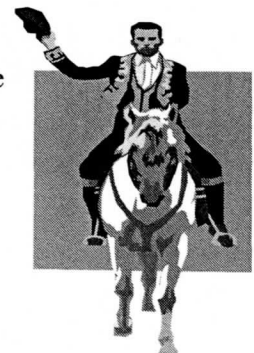
Kathy Brown

### Letter from the Editor:

Buenos Dias! (I guess I'm still hanging onto the Chili Line "Old West" feeling that left all of us with a bit of Spanish heritage!) It was a great ride thanks to Kathy and Jeff Brown and the San Juan Trail Riders (you know who you are!) Plans are underway for rides next year and I, along with a lot of other folks, hope we will have lots of ride options in our region. Although I haven't been a member for long, I have already noticed that it is usually the same handful of folks who do all of the work and I would like to encourage everyone to consider taking a bigger part in helping. There is always room for volunteers, no matter how much time you have.

Also, just a reminder that I am still pushing to send as many newsletters as possible via email. If you have a high speed Internet connection and would like to receive a lovely FULL COLOR, QUICKER newsletter let me know! (I can send the email ones as soon as the newsletter is finished....the snail mail newsletters have to wait for the printer and post office to do their share!)

Kerry Bingham  
kbingham630@msn.com  
505-327-1579



## Island in the Sky Ride Results

8/19-20/06 Region Three-CO

A-O/N/CP Total Riders: 51

Chairman: Judy Mason

Judges: Bob Bessert DVM, Susie Witter

Open Sweepstakes: LD Dixie Lee/Vasquez, Louise-97

Novice Sweepstakes: Blue Spruce Shanta/Howell, Perran-97

### Open Heavyweight

- 1/3 Rocky Top II/Ward, Lin
- 2/2 Touch's Yeller Gold/Inman, Gary
- 3/1 Rockin' EZ Royal Tee/Ancell, Steve
- 4/4 Rock'n E.Z. Rey/Sims, Jerry
- 5/5 Obie Won/Spanoff, Olga
- P MT Top Gun/Richardson, Carla

### Open Lightweight

- 1/2 LD Dixie Lee/Vasquez, Louise
- 2/1 Blue Skies Afyre/Johnson, Donna
- 3/3 WA Cimation/Schumack, Laura

### Novice Heavyweight

- 1/3 Clarion's Buddy/Mottern, Julie
- 2/ April/Snip, Ginger
- 3/2 SRU Fire Alarm Chili/Sandvik, Dean
- 4/5 Spirit of St. Louis/Steng, Patty
- 5/ Joker/Guthrie, Jan
- 6/ Cora/Denison, Helen
- /1 Royal Thistle/St. Peter, Diane
- /4 Thunder 6/Auer, Beth
- /6 Fred/Smith, Tamarie
- Lefty/Arnett, Leona
- Son/Helgeland, Krysten
- P GF Centaurus/Dietrich, Lois
- P Biscuit 2/Meyer, Laura
- P TM Beyjavou/Stake, Matt

### Novice Lightweight

- 1/1 Blue Spruce Shanta/Howell, Perran

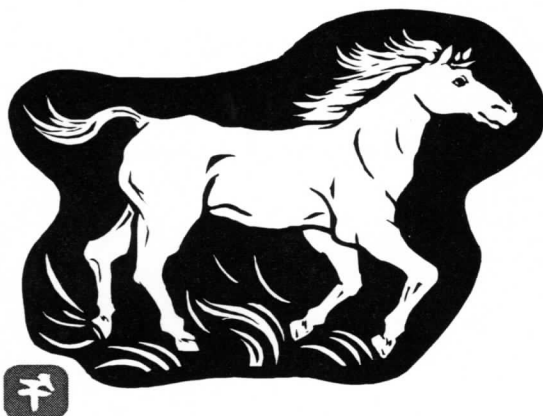
- 2/5 Snap/Ferganchick, Brandy
- 3/2 Moose/Dunkelberger, Donna
- 4/ Indiana Jones/Frane, Vonnice
- 5/ Bryanna/Andrews, Jill
- 6/3 Eduardo de Negrito Knight/Wingle, Diane
- /6 Colt 45/Courtney, Carole
- /4 Nicwacar Cameo/Sandvik, Vikki
- Sonny's Moon/French, Beth
- SS Khanadian Mist/Galchutt, Pamela
- Kenlyn Ali Khemo/McCulloch, Cheryl
- Missy/Mettler, Cindy
- P Skid/Campbell, Andrea

### Novice Junior

- 1/1 Emage of a Cutter/French, Phaelen

### Competitive Pleasure

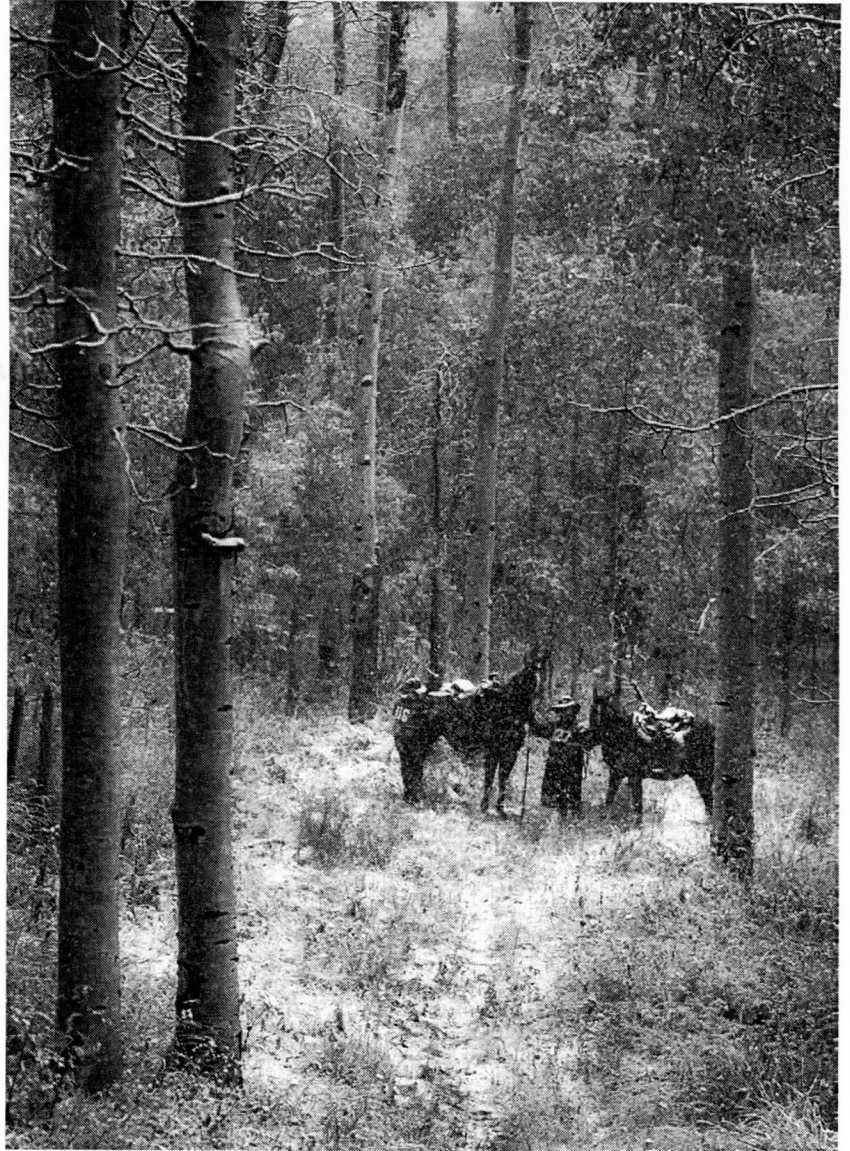
- 1/1 Cappuccino's Minnie Pearl/Rubenstein, Angie
- 2/6 Bonanza's Rebel G/Sims, Beth
- 3/4 Prime Contender/Yates, Terry
- 4/ Snip Black Ice/Fucigna, Isabel
- 5/2 Aires/Shanor, Kathy
- 6/ Pearl/Brooks, Wendy
- /3 Czarino/Crooks, Deb
- /5 Lady's Charlie B/Ancell, Janine
- Cayenne/Halligan, Sherri
- BHR Hasan China Moon/Heniser, Vicki
- Regala del las Estrellas/Marquardt, Diana
- Ace of Heart's WDG/Miller, Linell
- Ebony's Magic Motion A/Pollard, Bruce
- Pride's Lawyer/Sinnett, James



## Rocky Mountain Dream

By Kerry Bingham as told by Olga Spanhoff

Boulders, bogs, and bolting pretty much described the beginning of the Rocky Mountain Dream Ride. The day started out dry but quickly went to rain, which went to sleet, which went to snow. Riders felt like a postman....neither sleet, nor rain, nor dark of night! It got to the point where the snow was so thick I couldn't see through my glasses. My lack of vision was not helped as I went down the trail with my riding buddies and trees were falling down behind us, collapsing from the heavy weight of the snow. If you have never heard a tree crashing in the forest, it is quite an intimidating sound, especially for horses...thus, the bucking and bolting ensued. We decided to hurry up and get back to camp, we're cold! We were close to lunch, but the trail had been modified due to weather. Fortunately I wasn't so blind, and my horse wasn't bolting so fast that I actually saw a baby moose. We were concerned about mama but never saw her. That night It snowed and frosted. There was a good inch of ice in the horses' water buckets when we woke up Sunday morning. The second day was better...cold, but no snow. At least I could see now! I rode in a down coat, ski gloves and heater packs in gloves....that's how cold it was. Most people stuck with it.....pretty tough and hardy group. The top of nine mile hill was windy and snowy with at least 2 inches on the ground. Kudos to management for dealing with a tough situation and running a great ride. The trail was very well marked. They handled everything very well with the extreme weather, always considering safety first. Kudos also to the riders who were bold enough to ride in the weather and stick with it! Rocky Mountain Dream could have easily been a Rocky Mountain nightmare, but thanks to the ride managers it was a wonderful ride, one that memories are made of!



## Rocky Mountain Dream Ride Results

9/16-17/06 Region Three-CO

A-O/N/CP Total Riders: 42

Chairman: Jane Young

Judges: Donna Johnson DVM, Pat Montgomery

Open Sweepstakes: Summer/Wolgram, Betty-96.5

Novice Sweepstakes: Comb's Indiana Jones/Frane, Vonnice-98.5

### Open Heavyweight

1/2 Rock'n E.Z. Rey/Sims, Jerry

2/1 Obie Won/Spanoff, Olga

### Open Lightweight

1/3 Summer/Wolgram, Betty

2/2 Cloudsrest Zephyr/Korthuis, Tracie

3/1 GF Jokers Are Wild/Scarlett, Tracie

P Cedarmeaa Rushai/Mason, Judy

### Novice Heavyweight

1/6 My Favorite Harley/Shelton, Ron

2/1 Thunder 6/Auer, Beth A

3/4 Bandit/Feazell, Juleen

4/2 Spirit of St Louis/Steng, Patty

5/3 Jet's Cookie/Daggett, DeWitt

6/5 Skipshot Cricket/Lover, Dee

P Black Hawk Down/Bialy, Lisa

P Fugitive/Crisp, Larry

P Smoke/Smith, Debbie

P Phlame/Crisp, Carol

P Dakota Pop/Butler, Roxanna

P Mr Cirus/Dorr, Sandra

P Thunder Express/Minion, Diane

P Mistys Czarina/Prijatel, Gwyn

### Novice Lightweight

1/ Comb's Indiana Jones/Frane, Vonnice

2/2 Bryana/Andrews, Jill

3/ JD Docker/Solomich, Debi

4/6 Margie Lynx/Kissman, Kimberly

5/ Big Chocolate Chip/Quevillon, Corisa

6/ Moose/Dunkelberger, Donna

/1 Aladdin/Beardsley, Cat

/3 Skid/Campbell, Andrea

/4 Ramis S Shilo/Scott, Syndi

/5 BlueSpruce Shanta/Howell, Perran

SS Khanadian Mist/Galchutt, Pamela

Kenlyn Ali Khemo/McCulloch, Cheryl

Classica Arco Iris/Purnell, Meg

TC Twistin Time/Walls, Sharyl

P Bisquit 2/Meyer, Laura

P Elegant Pride Delight/Preheim, Jana

P Blue-Eyed Bandit/Smith, L. Karen

## Chile Line Ride Results

9/30-10/1/06 Region Three-NM

A-O/N/CP Total Riders: 26

Chairman: Jeff & Kathy Brown

Judges: Joe Quintana DVM, Judy Cumberworth

Open Sweepstakes: Rocky Top II/Ward, Jim-97

Novice Sweepstakes: Dave/Fleischer, Donna-92

### Open Heavyweight

1/3 Rocky Top II/Ward, Jim

2/1 Touch's Yeller Gold/Inman, Gary

3/2 Rockin' EZ Royal T/Ancell, Steve

4/5 Obie Won/Spanhoff, Olga

5/4 Rockin EZ Rey/Sims, Jerry

P Quiero/Belcheff, Karen

### Open Lightweight

1/1 Huck's Last Love/Ward, Lin

2/3 Cloudsrest Zephyr/Korthuis, Tracey

3/2 Classic Son CC/Courts, Linda

P Blue Skies Afire/Scarlett, Tracie

### Novice Heavyweight

1/2 Chama/Bingham, Ken

2/1 All that Jazz/Stewart, Ruth

P Sienna/Green, Shelley

P Dee Bar/Westmoreland, Cheri

### Novice Lightweight

1/2 Dave/Fleischer, Donna

2/1 Skid/Campbell, Andrea

### Novice Junior

P Kahlua/Lojko, Deni

### Competitive Pleasure

1/5 Bonanza's Rebel G/Sims, Beth

2/2 Independence Dai/Fitzpatrick, Sena

3/1 Aries/Shanor, Kathy

4/4 Cayenne 5/Halligan, Sherri

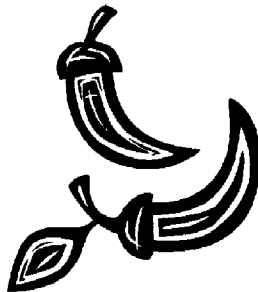
5/6 Junes Lucky Mac/Bingham, Kerry

6/3 Ace of Hearts/Miller Inman, Linell

P Einstein/Lojko, Laura

P Pride's Lawyer/Sinnett, Jim

P Emeraldita/Whitman, Benedicta





## What Every Rider Should Have in Their Saddle Bag

By Kerry Bingham as told by Olga Spanhoff

Late this past summer, my friends and I were gearing up for an upcoming competitive trail ride. We decided to ride Escalante canyon (south of Grand Junction). We decided to do about a 20 mile ride and figured it would take us 5 or so hours. We take off with a BLM map, and some saddle bags with essentials for a nice long ride. We start climbing a lot more than the map shows. We saw lots of rocks, rattlesnakes, bunnies....next thing we know we're not at the road we thought we ought to be at and it's getting dark. One of my friends was getting cold so I pulled out a survival blanket for her wrap around her shoulder. The other girl pulls some heater packs and makes a sling from her scarf to hold the heater pads on her neck to get her warmed up. Its getting darker. We thought we'd make a right



and two lefts and be back on the right trail to the trailer....which we should have already been at, and by now its pitch black. There are lots of stars, but no moon. We got the glowstick out to look at the map and we saw something in the tree. We walked up to a tree thinking it was a sign ... but it was a skeleton!!! (must have been an old hunt camp...deer skeleton!) In the meantime I taught them the famous NATRC game of throwing pinecones at each other to pass the time. Finally, we decided to call 911 and we gave them as good a description as we could as to where we were. I mean, if we knew where we were, we wouldn't be lost, huh? I told my friends that they probably wouldn't find us anytime soon and that we had better make camp. We found a place and gathered some wood for a fire and began to set up

camp...which wasn't hard with the few supplies we had. We put the saddle blankets on the ground to sit on, horses were tied to trees, fire was going, one space blanket as a wind block and one space blanket to share. We sat there huddled, somehow comforted by the fire and the occasional snorting of our horses. Finally, at 1:30 in the morning we hear a horn. I stood up and saw lights in the distance. Lo and behold there was Search and Rescue! They had a pretty good sense of humor for 1:30 in the morning. They said that we looked pretty well prepared...best they had seen all week! One told us we could have made it through the night no problem! We're glad we didn't have to find out. Then they tell us to come on, lets go get in the truck. Can you imagine he thought I would actually leave my horse out there? Well, we saddle up at 2 am with saddles on two of the horses....one horse is very tired so we ponied/dragged it out. Rode another ten miles at 2—4 am behind the Search and Rescue vehicle. S and R takes the horseless rider to get the truck and trailer. We wait along the side of the main road, waiting for her to show up with the trailer....its 4:30 in the morning. We turn the horses loose and let them graze, and sit in the cop car staying warm. Finally our beloved rig shows up. We get the horses loaded up and drive out by the highway. It's 6:30 in the morning. Moral of story...minimum...carry gear for your horse....space blanket, lighter, and a glowstick. At least one small lunch for your horse and some for yourself. CTR should be easy after this!!!

## Loosing Dot

On Saturday, August 26, 2006 we lost our beautiful sorrel and white tobiano paint mare to colic. She was in uncontrollable pain and the painful decision to put her down had to be made.

I was at my client's house the day she was born. She had so much color and had that dot on the middle of her forehead that gave her her name. I told my client that if he ever wanted to sell that horse to give me a call. When she was two he was moving to Mexico and I got my opportunity.

Being a busy veterinarian I had no time to train a two year old so found an experienced 4Her to help with her training. We co-owner Dot with Kim Uhrich and she did a wonderful job with her initial training. Kim was interested in reining so that is how Dot got her registered name-Dot's Centrifugal Motion.

When Dot was four years old we bred her to a reining stallion and she produced a wonderful sorrel colt named Cowboy. Kim got ownership of the foal and we got full ownership of Dot.

When we first got Dot to our house we didn't do a lot with her. She was a very testy mare and I was busy competing on Star and JJ on Sassy. After Star's injury and Sassy's untimely death we decided to give this mare a go. JJ and Dot really bonded. He has such a patient personality for her testy one.

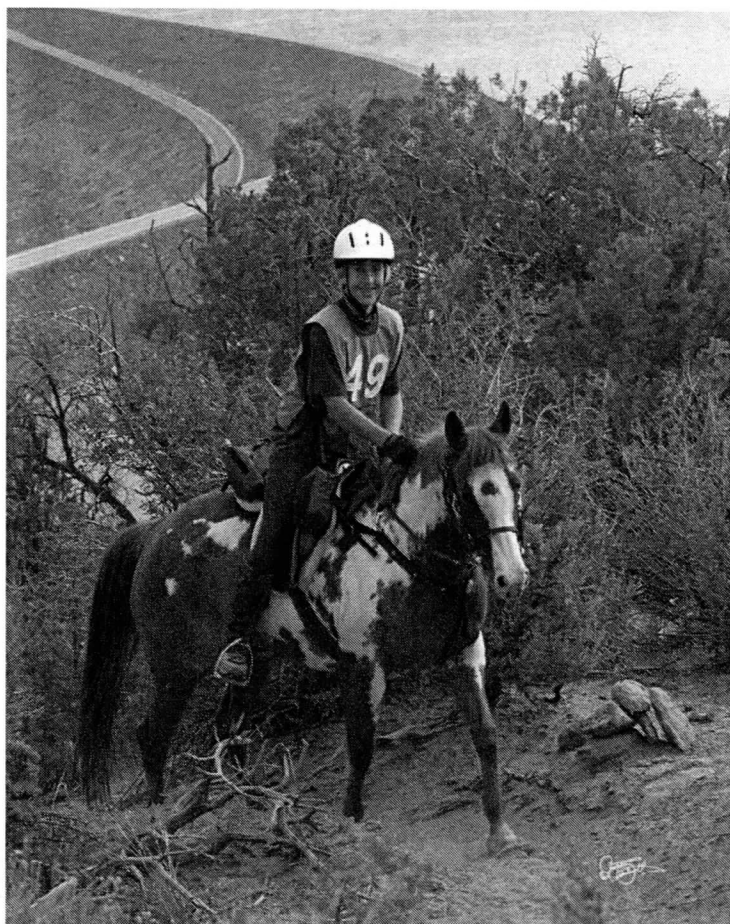
JJ showed Dot in 4H both in Western and English. She had such a nice forward gait she really excelled in English. JJ won reserve overall English showman for his division at this years county fair in August.

As most of you know JJ won the national 4H award with her last year riding Novice and made the decision to take the challenge of riding CP this year against the adult competitors. JJ took this goal very seriously and worked very hard with Dot on the Open level obstacles. He would practice an obstacle numerous times until they would get it right. Dot became very responsive and just a joy to ride. She could out-walk even the Fox Trotters. JJ did well in CP and placed in the awards at all the rides he entered this year against a large competitive field.

Three years ago, on Labor Day weekend, Dot coliced and was taken to CSU for treatment. She had a displacement and required colic surgery in the middle of the night. She survived this surgery but had a large hernia in her abdominal wall from a post surgery infection at the incision. We kept a close eye on it but knew if we ever wanted to breed her again we would have to have it repaired.

Last year we sent Dot to a professional horse trainer to hopefully slow her down so JJ could be more competitive on her in the show Western show ring. Unfortunately this trainer would pull the horses' head around to the side and tie it to the saddle and leave them tied that way for several hours in the arena with other horses tied that way. Something must have happened, which no one will confess to. Dot ended up with a very painful neck which took x-rays, chiropractic, and massage therapy to treat. Her neck never was right again.

We just cry when we think of that terrible day in the rain that we had to say our final good bye to our 9 year old paint mare that had come so far. Dot and JJ were true partners that loved going down the trail and performing patterns in the show ring. She will truly be missed. -submitted by Kay Gunckel



The following article is being printed after a very close call with lightning at the Island In the Sky ride. Apparently, lightning struck a little too close at a P&R, raising hair on necks and spooking horses. Even though the article is directed towards hikers, it may apply to equestrians or any outdoor enthusiasts.

## Lightning Precautions for Hikers

Submitted by Sierra Club member Frank R. Leslie

### Introduction

Disclaimer: There are no guarantees with lightning, as unpredictable effects may occur. Travel at your own risk. Trail crews often work in alpine areas (open grassy meadows) well above the treeline. In these open meadows, workers are at risk from lightning strikes. In high mountain passes, there is little shelter, and the best precaution is the rapid descent to a lower, heavily treed forest. Within a heavily forested area, there are many trees that spread the risk of a lightning strike near you.

### Dodging Lightning Dangers

I recommend a position crouching with your feet next to each other and your arms wrapped around your legs. Avoid contact between hands and ground. In forested areas, stay at least 8 ft away from the trunk of an average height tree. Do not stand near a tall tree that projects above its companions.

After lightning current flows down a tree, it dissipates through the roots and wet soil. This current is closer to the surface if the soil is dry except in the top rain-soaked area. In these conditions, the current flow is concentrated in perhaps the top six inches of soil. As it flows away from the tree, there is a voltage drop across the wet soil. Cattle and horses are especially likely to be shocked, as their hooves are far apart. So by keeping our feet together, we limit the voltage difference that might cause current to flow up one foot and down the other.

Crouching reduces the risk of taking a strike to the head or shoulder.

Members of a party should stay separated by at least ten feet, as if one person is struck, the others will likely survive, and then provide CPR for the struck person. This is about the only time that CPR in the wilderness is worth doing, as it is impractical to do CPR for several hours. Lightning strike victims have a very good chance of resuscitation when they are immediately given CPR. They are not electrically charged; after all, they are lying on the ground, and the lightning has stopped.

**An obvious warning is when the electrical field strength in the air is so high that your hair stands on end. In a memorable videotape, some three smiling hikers were standing there with their hair rising, and a moment later, two were struck and killed by lightning.** If this happens immediately drop to the crouched ball position. A nondestructive test of this is to put your arm near your TV screen. You will feel the hairs being attracted to the screen. If you should feel a similar effect on a mountain peak, it's time to run fast to lower protection.





*Join us for  
Region III  
Awards Conference and Banquet  
January 12-14, 2007  
Ft. Collins Colorado*



*Contact Kip & Tracey Korthuis  
at 970-613-9455 or  
[tkorthuis@aol.com](mailto:tkorthuis@aol.com)*

*Huge discount on tickets for  
early registration!*

*If you want to verify your points please do so by November 15th..  
No changes will be made after that.*

## White River's Draft Travel Management Plan

The White River National Forest Travel Management Plan is out. This plan will close horse and stock use in areas of the WRNF. This is the largest NF in the U.S. and is located in Colorado. Some of the areas it includes are the Collegiate Peaks, Eagles Nest Wilderness, the Flat Tops, the Holy Cross, Ptarmigan area, Fryingpan, Maroon Bells, Snowmass. As you can see, this is a very large portion of the Colorado Rockies.

One of the areas of this proposal that I think we all need to be made aware of is the use of segregated trails. Most districts use a system where foot traffic and horses can go on any trail, then you have non-motorized use such as mtn. bikes, then motorized use, etc. The proposed plan changes that system. They are trying to create areas where hikers will not run into any horses or other stock. Some of the trails are proposed to be closed to horses even though you don't ever see anyone using them.

It is important that horse people get involved. There are people out there trying to keep horses out of all wilderness areas.

My concern isn't just about which trails are being closed but about the precedent this sets for other areas. Most of these areas are in the Wilderness where you see very few if any other users. I can understand segregating usage in busy areas such as state parks close to big towns where safety is of concern.

The FS states that, "Within wilderness, travel management conflicts exist. Some hikers dislike encountering horses or even the evidence of horse use in wilderness areas." They feel that it is their job to provide a horse free experience for these hikers. If this proposal passes, the closure of more wilderness in other areas and states could follow.

The comment period to the FS for this proposal is very short, so trail riders need to send letters voicing their opposition to this plan ASAP. If we can voice our concerns with credible data, it will have more of an impact. If we keep silent, other interests with louder voices will cause us to lose our right to ride on state and federal lands.

Did you realize that the horse industry is larger than the tobacco industry? We need to stick together and make a big commotion. Everyone who is involved with horses needs to join together and make sure our voice are heard.

Draft Travel Management Plan and DEIS Comments There are several methods you can use to submit your comment about the White River's Draft Travel Management Plan. (Note: Please only submit your comment once - they are all treated equally, and will only be dealt with once.) For all submissions, please include your name and address.

1) You can use our web-based comment form  
([http://www.fs.fed.us/r2/whiteriver/projects/travel\\_management/web\\_comment/tmp\\_comment.shtml](http://www.fs.fed.us/r2/whiteriver/projects/travel_management/web_comment/tmp_comment.shtml))  
to email brief comments.

When you submit your comment it will send an email directly to the Content Analysis Team, who will process your comment into the comment database for the TMP. The space limitation for the comment section is about 75 columns by 25 lines. 2) You can submit an electronic letter or document by sending it directly to the following email  
[address:wrnftmp@contentanalysisgroup.com](mailto:address:wrnftmp@contentanalysisgroup.com)

3) You can mail or FAX your comment:

Mail: WRNF Travel Management Plan and DEIS c/o Content Analysis Group  
P.O. Box 2000  
Bountiful, UT 84011-2000  
FAX: 1-801-397-2601

Please write the Content Analysis Group, expressing your thoughts about limiting trail use at this National Forest and the precedence that it can set. We are loosing access to too many natural resources to let this slip by and silence will be deadly for us. Also, please forward this letter to all of your trail riding friends and all who are involved in the horse industry.

To go to the site:  
White River National Forest -  
Travel Management Plan ([http://www.fs.fed.us/r2/whiteriver/projects/travel\\_management/index.shtml](http://www.fs.fed.us/r2/whiteriver/projects/travel_management/index.shtml))



# ***More Forest Service Info...***

The comment period to the FS for this proposal is very short, so trail riders need to send letters voicing their opposition to this plan ASAP. If we can voice our concerns with credible data, it will have more of an impact. If we keep silent, other interests with louder voices will cause us to lose our right to ride on state and federal lands. Did you realize that the horse industry is larger than the tobacco industry? We need to stick together and make a big commotion. Everyone who is involved with horses needs to join together and make sure our voices are heard. Please copy and paste the following letter (or write your own letter), and send it to the Content Analysis Group, White River National Forest. Forward this letter to all of your trail riding friends and all who are involved in the horse industry.

Elaine

Riding our horses on public lands in the future. There are many places we ride that are only accessible from foot or horseback. Most of my friends are not hikers. We are horseback riders and hunters who use our horses to ride into the back country areas. We feel it would be a great shame to be denied access to ride on trails that have been shared in the past by both hikers and horseback riders. It our hope that our children and grandchildren will be able to experience that same magnificence of the wilderness, that we have viewed from the backs of our horses in the past.

Most hikers that we have met on the trail have been very courteous and haven't seemed to mind sharing the trail with horses. When we ride into wilderness areas, we see very few, if any, other users. The FS states that, "Within wilderness, travel management conflicts exist. Some hikers dislike encountering horses or even the evidence of horse use in wilderness areas." It is my belief that the number of hikers who dislike encountering trail riders, particularly in wilderness areas, is a small percentage. They should realize that the vast majority of trail riders are out on the trails for many of the same reasons that they are. We simply want to experience the great beauty and tranquility that these wilderness areas offer.

A lot of hikers do not realize that the use of stock on trails help keep it open for them. Without horses, many trails would become overgrown with vegetation and lost. Segregation of trails would end up being a detriment to hikers as well.

The most recent economic study done by Deloitte Consulting LLP for the American Horse Council Foundation in 2005, provides proof that the horse industry plays a very important part in our economy. Government officials and the public should be made aware of these facts. The study concludes that there are 9.2 million horses in the U.S. Out of those, 3,906,923 are used for recreation. That's over 42%! In Colorado alone, the national industry has a \$1.6 billion impact on their economy and the Colorado horse industry directly provides 5,800 full time equivalent jobs. So you realize that the loss of stock use in wilderness areas would also have a negative impact on the economy.

It is important that we be able to continue to ride on public lands, wilderness areas, national monuments, and other designated areas that are administrated by the National Park Service, and Bureau of Land Management, the United States Fish and Wildlife Service, or the Forest Service. The use of stock on our federal and state lands has a long tradition, stimulates economic activity and provides a unique opportunity for family recreation and a positive activity for our youth. I am hopeful that you realize the value and importance of stock use in the White River National Forest. Thank you for your attention to this matter.

Sincerely, Richard Newburg

See Sample Letter on Next page! Sign and Send!

WRNF Travel Management Plan and DEIS  
c/o Content Analysis Group  
PO Box 2000  
Bountiful, UT 84011-2000

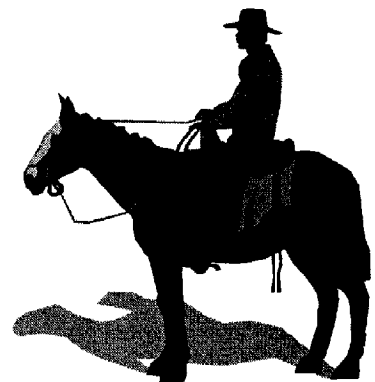
Dear Members of the Content Analysis Group,

For several years now, a group of my friends and family have been camping and trail riding with our horses in wilderness areas. We greatly enjoy these trips and are hopeful that we will be able to continue to enjoy the privilege of riding our horses on public lands in the future. There are many places we ride that are only accessible from foot or horseback. Most of my friends are not hikers. We are horseback riders and hunters who use our horses to ride into the back country areas. We feel it would be a great shame to be denied access to ride on trails that have been shared in the past by both hikers and horseback riders. It our hope that our children and grandchildren will be able to experience that same magnificence of the wilderness, that we have viewed from the backs of our horses in the past. Most hikers that we have met on the trail have been very courteous and haven't seemed to mind sharing the trail with horses. When we ride into wilderness areas, we see very few, if any, other users. The FS states that, "Within wilderness, travel management conflicts exist. Some hikers dislike encountering horses or even the evidence of horse use in wilderness areas." It is my belief that the number of hikers who dislike encountering trail riders, particularly in wilderness areas, is a small percentage. They should realize that the vast majority of trail riders are out on the trails for many of the same reasons that they are. We simply want to experience the great beauty and tranquility that these wilderness areas offer.

A lot of hikers do not realize that the use of stock on trails help keep it open for them. Without horses, many trails would become overgrown with vegetation and lost. Segregation of trails would end up being a detriment to hikers as well.

The most recent economic study done by Deloitte Consulting LLP for the American Horse Council Foundation in 2005, provides proof that the horse industry plays a very important part in our economy. Government officials and the public should be made aware of these facts. The study concludes that there are 9.2 million horses in the U.S. Out of those, 3,906,923 are used for recreation. That's over 42%! In Colorado alone, the national industry has a \$1.6 billion impact on their economy and the Colorado horse industry directly provides 5,800 full time equivalent jobs. So you realize that the loss of stock use in wilderness areas would also have a negative impact on the economy. It is important that we be able to continue to ride on public lands, wilderness areas, national monuments, and other designated areas that are administrated by the National Park Service, and Bureau of Land Management, the United States Fish and Wildlife Service, or the Forest Service. The use of stock on our federal and state lands has a long tradition, stimulates economic activity and provides a unique opportunity for family recreation and a positive activity for our youth. I am hopeful that you realize the value and importance of stock use in the White River National Forest. Thank you for your attention to this matter.

Sincerely,





# BOARD MEETING ISLAND IN THE SKY

August 18, 2006

## MEMBERS PRESENT

KATHY BROWN, JIM WARD, LIN WARD, DOREEN PORTNER, SHERRI HALLIGAN, JERRY SIMS,  
LOIS DEITRICH, SUSIE WITTER, SANDY HOLLIS, KATHY SHANOR

## GUESTS

JIM SINNET, LINNEL MILLER, GARY INMAN

Meeting called to order at 11:00 am by Kathy Brown

## President's Report

Safety Rider program improvement: NO novice riders, NO unconditioned horses. Better trail marking needed so horses/riders don't have to rush.

Sandy Hollis also needs new open safety riders as her list is dwindling. Back Country Horsemen may be source as well as ride managers need to suggest people.

Membership renewals: slow, reminders sent out by Laurie Di Natalie but if people haven't renewed memberships by this late date, probably aren't going to renew this year.

Ride Management Guidelines: Need standardized ribbon color for trails. Trail marking and timing are utmost importance. To many rides have timing issues and riders missing loops. Mandates should be set for rides (GPS?) Ride evaluations given to each rider at end of rides to be given to ride manager and a copy sent to National. Maybe establish a reward system for different rides such as best ride of year, best food, best trail, etc., Competition between rides in the region to be awarded a plaque could be started to be given to management that got voted best of the year. Kathy Brown appointed an AdHoc committee of Lin & Jim Ward, Susie Witter, and Doreen Portner, to go over evaluation questions to be presented at board meeting in November. Decision will be made in Nov as to what kind of awards to be given to ride management.

Mentor meetings: These are good for new riders, need to be held at every ride.

Ride briefings: Need to limit to 45 minutes.

Tracie Scarlett and Carla Richardson are working on rides for next year. Carla is moving to Grand Junction and will help with getting the Rabbit Valley ride going again. Doreen Portner will help manage this ride to get a Western slope ride going again. It would have to be held around last weekend in April. All junior riders would be free if one parent rides. BLM is not happy that we are not using staging area.

Number of Meetings: Proposal to get board meetings to three per year instead of four. Need to have alternates to attend meetings so quorum can be met since there has been so much trouble with attendance. At this time we have to have four meetings/year. We can vote for three and have more meetings if needed.

Treasury Report: Kathy wants to wait on report until numbers are in from benefit ride. Two rides have still not re-paid start up fee. Kathy is pursuing these two managers for re-payment. (More on report later in meeting)

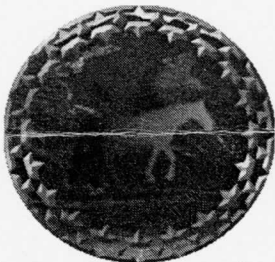
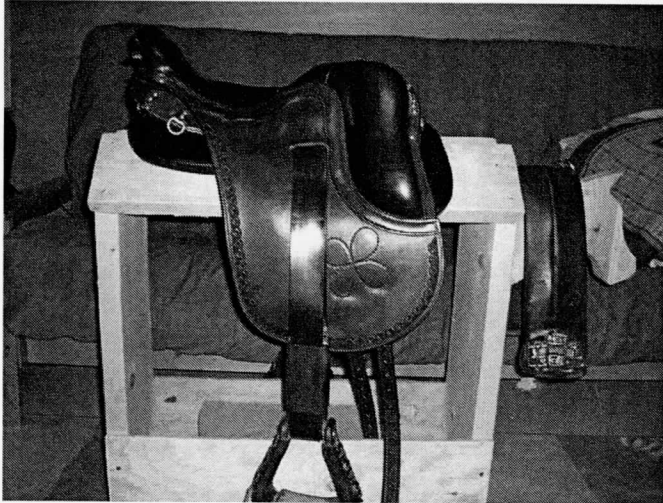
Rule regarding helping other riders was discussed. Doreen said that with permission from the judge, a rider could be helped if necessary due to some kind of physical limitation. The point was made that if a rider needs help, it should be brought to the attention of the judge at the beginning of a ride, not in the middle of it. Point should be mentioned at Friday briefing.

NATIONAL BOARD: Susie Witter had nothing new to report. Board members need to put in input for possible rule changes before November. Stabling issue still not clear. Send e-mails to Susie if you're not clear about a rule.

OBSERVATIONS VS OBSTACLES: This is a wording change that is creating confusion. This is a rule change 6-1, Section VI.A.7. Riders/members need to give Susie feedback on this wording. The Hoofprint magazine and Stirrup Newsletter will both have information regarding this issue.

TRAIL REPORT: Doreen reported that Forest Service is reviewing trail class system. Riders/members need to submit comments to Forest Service on trails. Sherri Halligan will send e-mail notice to as many members as possible on web site, information on how to send comments to Forest Dept. Law suits have been successful in stopping sale of land for development in some areas.

# Barn Sales and News Bits



***Gaited Horse Club  
of Colorado***

You are invited to come join our new horse club! It is the Gaited Horse Club of Colorado, and is open to all gaited horse owners and enthusiasts! Please browse our new web site:

<http://www.bialyranch.com/gaitedclub.html>

Our vision is to promote all naturally gaited horse breeds in Colorado for pleasure or show; to provide support and encouragement to gaited horse owners and enthusiasts; and to have more versatility events for our gaited horses. If you are interested in becoming a member, please e-mail me and I will send you our membership form. We will be having our first monthly meeting November 2 at 7 P.M. at the Pegasus restaurant in Castle Rock.

Thank you, Lisa Bialy (303) 646-0690

Christmas is just around the corner!

Orthoflex Cutback Endurance Saddle- Great condition, near new, 16.5" seat, pads and girth. Beautiful lightweight saddle with the Orthoflex flex panels to adjust to your horse! \$1250.00 reduced from \$1400. Call Cindy at 970-887-3576.

Thank you so much!  
Cindy

Cindy Harder  
Director of Sales & Marketing  
Beaver Village Condominiums-THMC  
970-726-8813